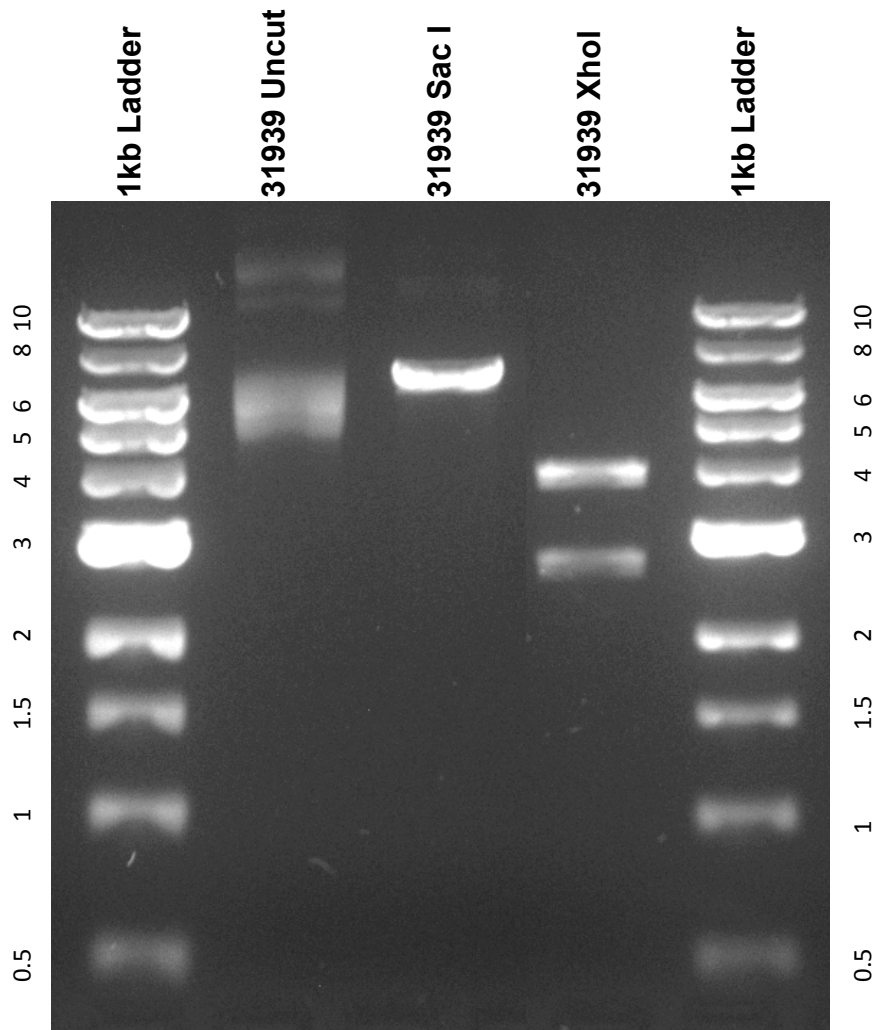


This gel depicts the NEB 1kb ladder and a digestion of the plasmid 31939 with the following enzymes: SacI and XhoI

Plasmid 31939: OCT4-eGFP-2A-Puro



DNA digested with Sac I single digest and XhoI single digest for **2 hours**.
Gel: 0.8% TAE and 4uL of ethidium bromide
Run for 1:5 hours at 100 volts