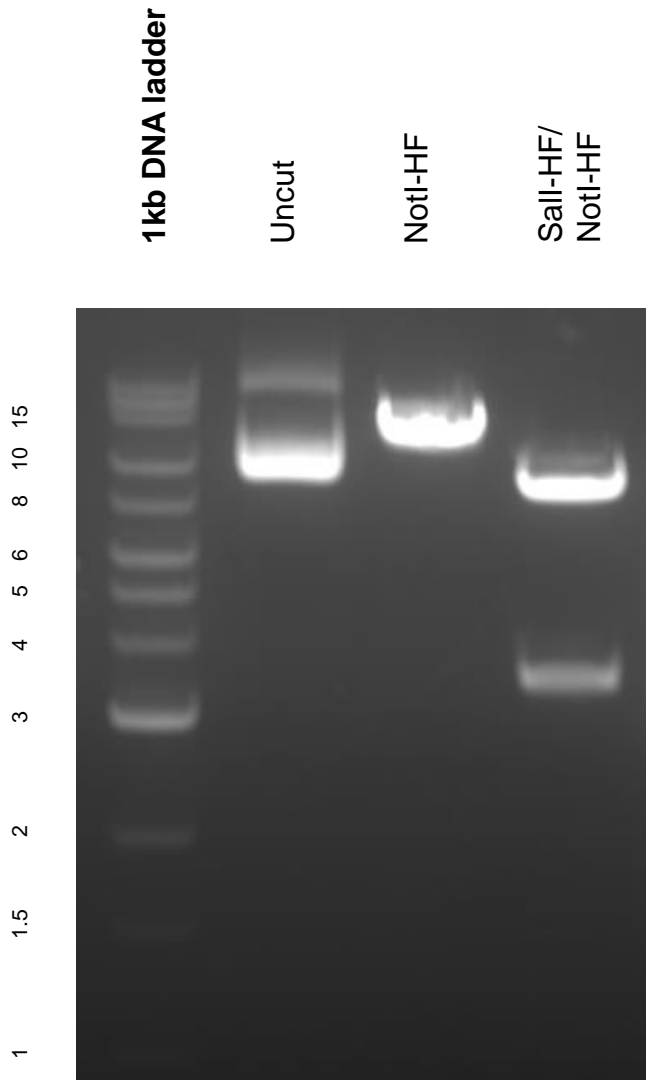


This gel depicts the NEB 1kb extend DNA ladder and a digestion of plasmid 32017 with NotI-HF, and Sall-HF/NotI-HF.

### Plasmid 32017: pLKO-puro FLAG SREBP1



DNA digested for 1.5 hours.

Gel: 1% agarose stained with ethidium bromide. Run for 75 minutes at 100 volts.