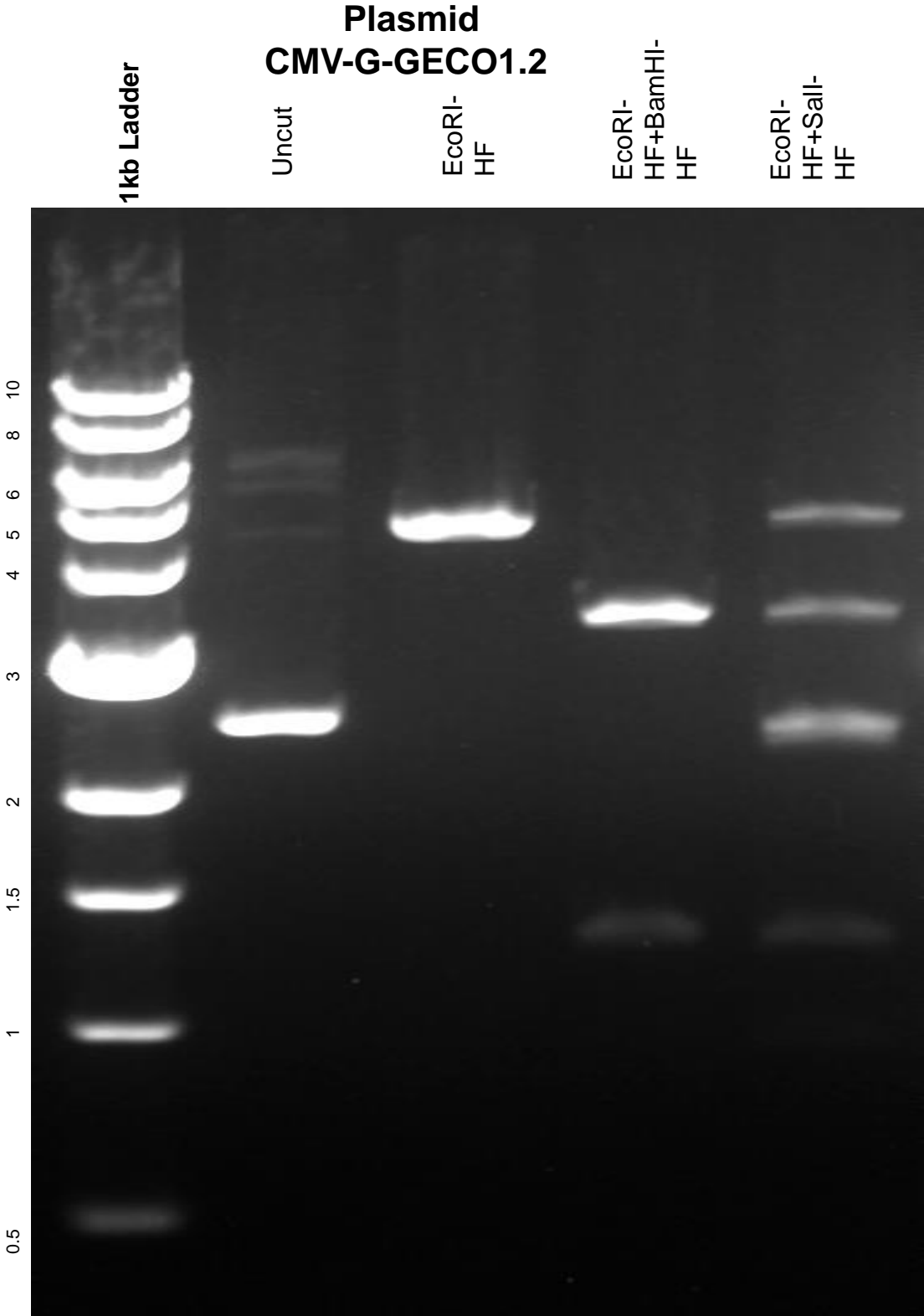


This gel depicts the NEB 1kb ladder and a digestion of the plasmid 32446 with the following enzymes: EcoRI-HF, BamHI-HF, Sall-HF



DNA digested with EcoRI-HF single digest, EcoRI-HF+BamHI-HF, and EcoRI-Sall-HF double digest for **2 hours**
Gel: 0.8% TAE pre-stained with 4 uL of ethidium bromide
Ran for 4 hours at **47 volts**