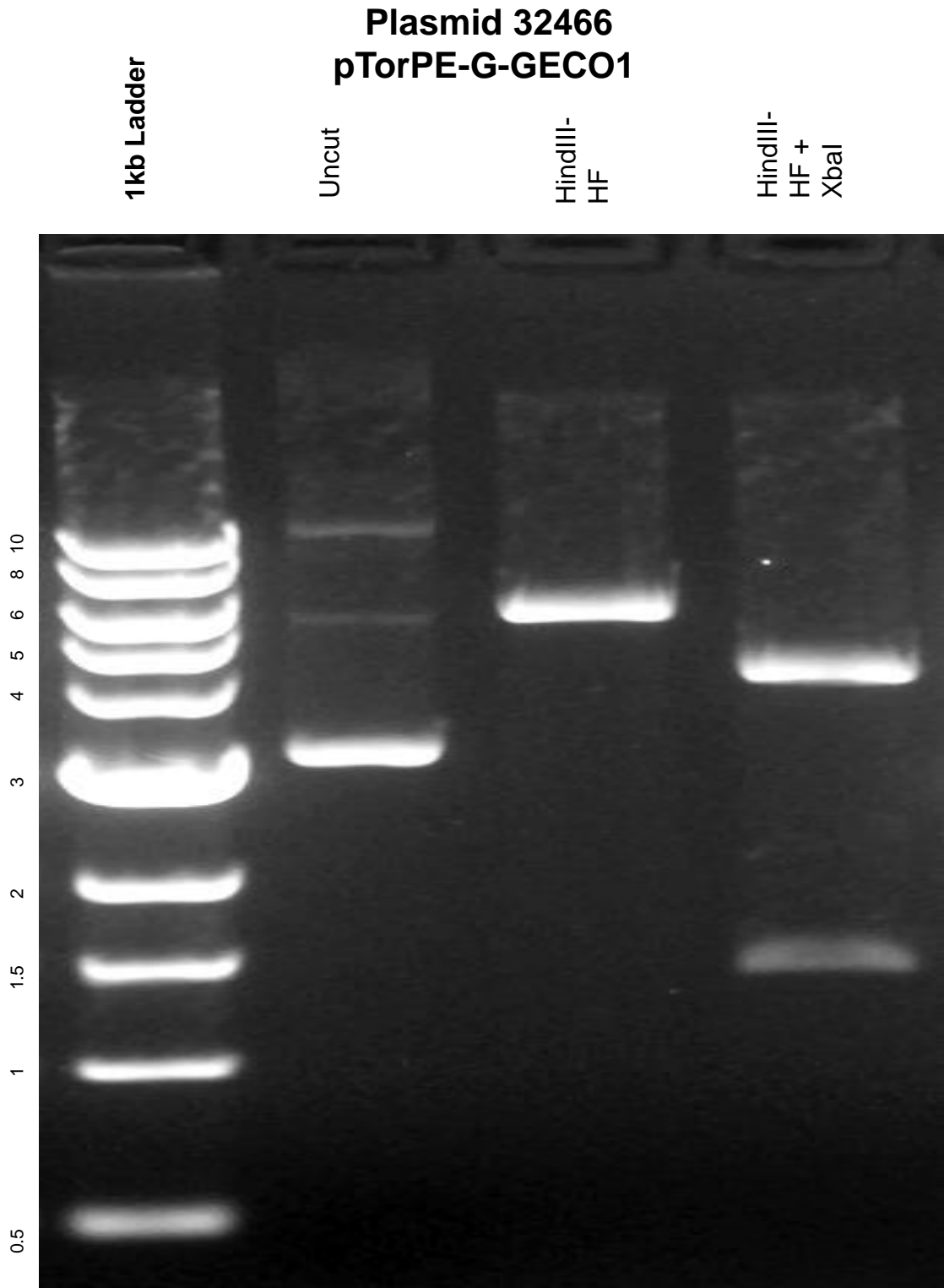


This gel depicts the NEB 1kb ladder and a digestion of the plasmid 32466 with the following enzymes: HindIII-HF, XbaI



DNA digested with HindIII-HF single digest, and HindIII-HF+XbaI double digest **2 hours**

Gel: 0.8% TAE pre-stained with 4 uL of ethidium bromide
Ran for 3 hours at **47** volts