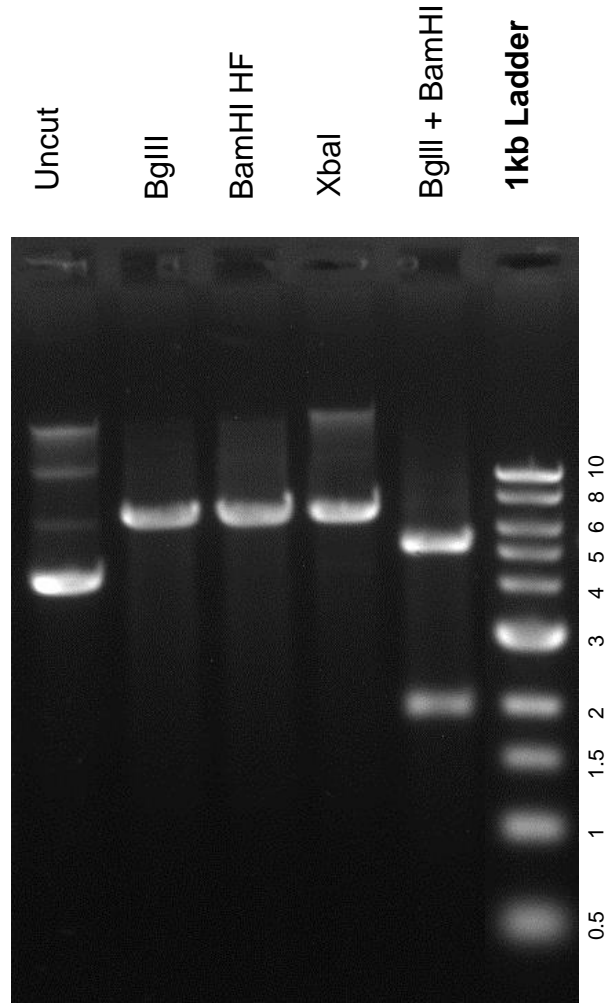


This gel depicts the NEB 1kb ladder and a digestion of the plasmid rAAV-syn::FLEX-rev::PSAML141F,Y115F:GlyR-IRES-GFP with the following enzymes: BgIII, BamHI HF, XbaI, BgIII + BamHI,

### Plasmid 32481

rAAV-syn::FLEX-rev::PSAML141F,Y115F:GlyR-IRES-GFP



DNA digested with single digest for **2 hours**

Gel: 0.8% TAE BgIII, BamHI HF, XbaI, BgIII + BamHI stained with 100 ml 1X TAE and 5uL of ethidium bromide

Ran for 1.5 hours at **60 volts**