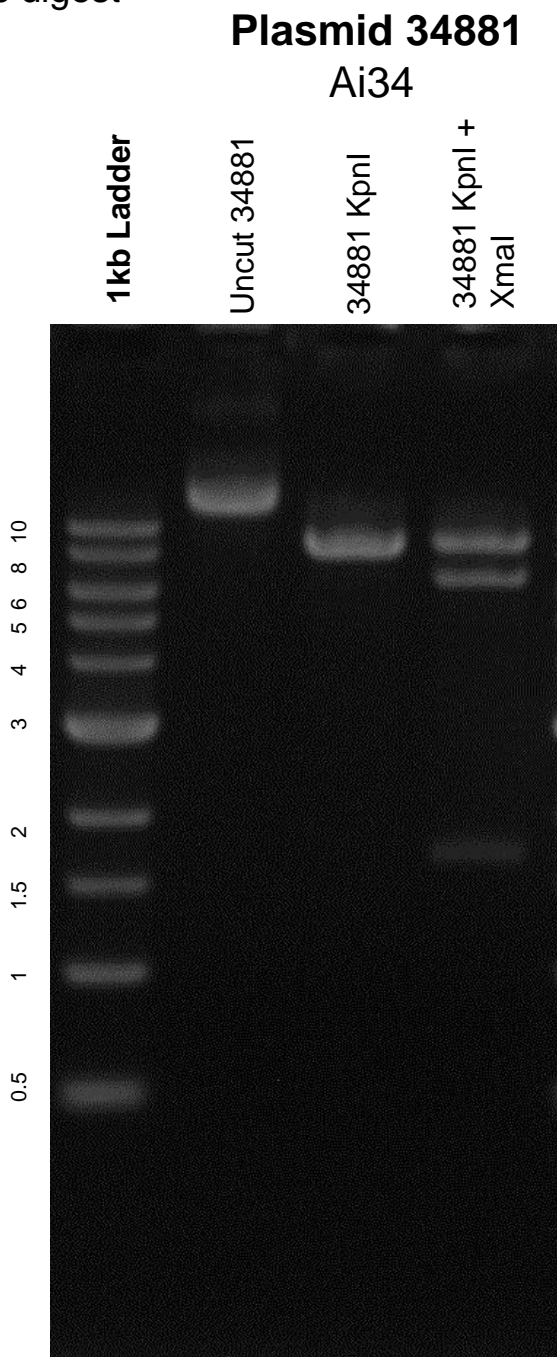


This gel depicts the NEB 1kb ladder and a digestion of the plasmid 34881 with the following enzymes: KpnI single digest, KpnI and XmaI double digest



DNA digested with KpnI single digest, KpnI and XmaI double digest for **1.5 hours**

Gel: 0.8% TAE stained with 100 ml 1X TAE and 5uL of ethidium bromide
Ran for 2 hours at **60** volts