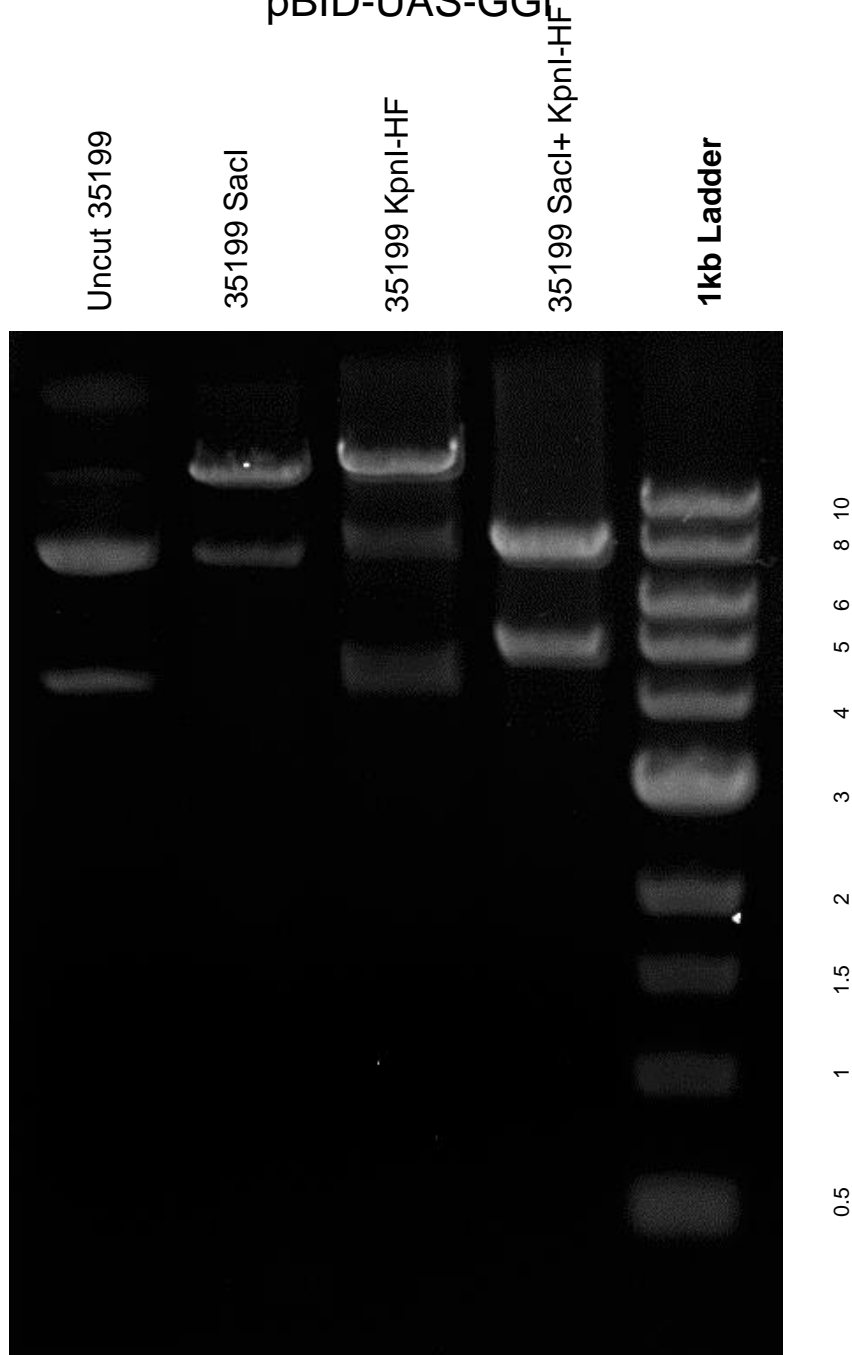


This gel depicts the NEB 1kb ladder and a digestion of the plasmid 35199 with the following enzymes: SacI single digest, KpnI-HF single digest, SacI+KpnI double digest

**Plasmid 35199**

pBID-UAS-GGi



DNA digested with SacI single digest, KpnI-HF single digest, SacI+KpnI double digest for **2 hours**

Gel: 0.8% TAE stained with 100 ml 1X TAE and 5uL of ethidium bromide  
Ran for 2.5 hours at **47** volts