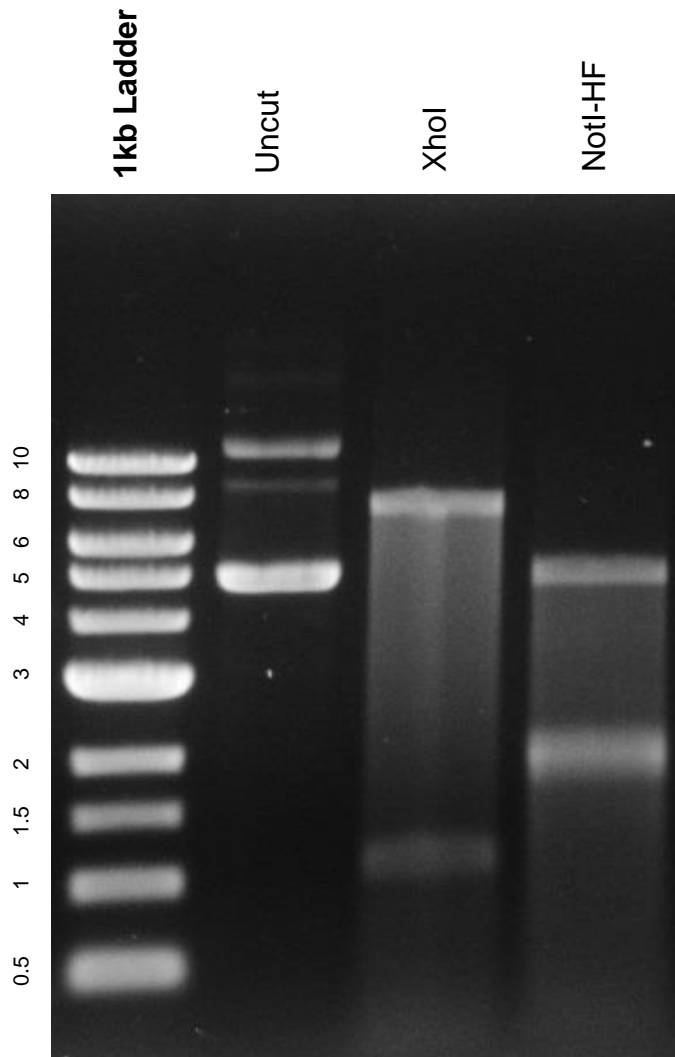


This gel depicts the NEB 1kb ladder and a digestion of the plasmid 35491 with the following enzymes: XhoI and NotI-HF

**Plasmid #35491
TOP-GFP.mC**



DNA digested with XhoI and NotI-HF single digest for **overnight**
Gel: 0.8% TAE stained with 100 ml 1X TAE and 5uL of ethidium bromide
Ran for 2 hours at **47** volts