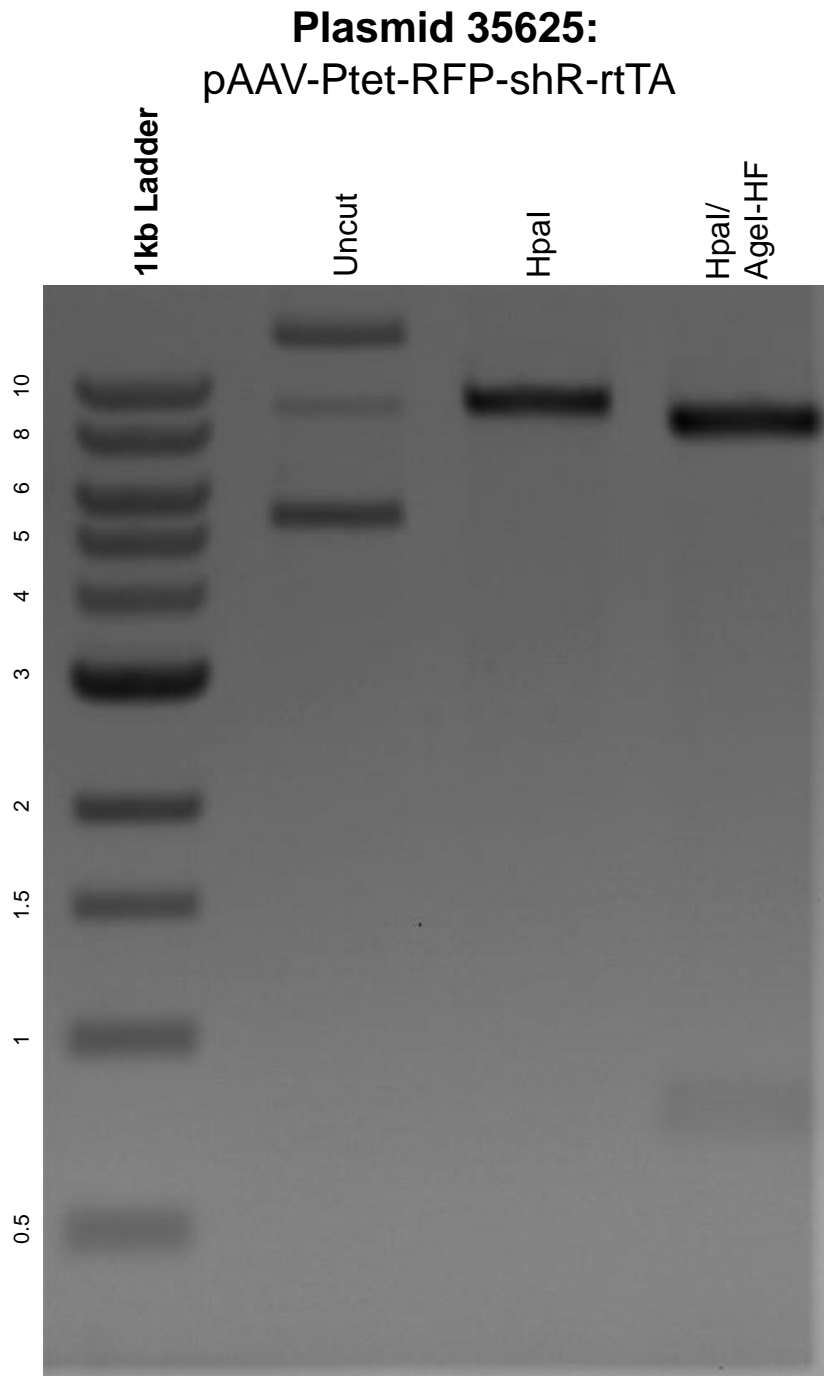


This gel depicts the NEB 1kb ladder and a digestion of the plasmid pAAV-Ptet-RFP-shR-rtTA with the following enzymes: HpaI and AgeI-HF.



DNA digested with HpaI single digest and HpaI/ AgeI-HF double digest for **2 hours**.
Gel: 0.8% agarose stained with 6 uL of ethidium bromide.
Ran for 1.5 hours at 100 volts.