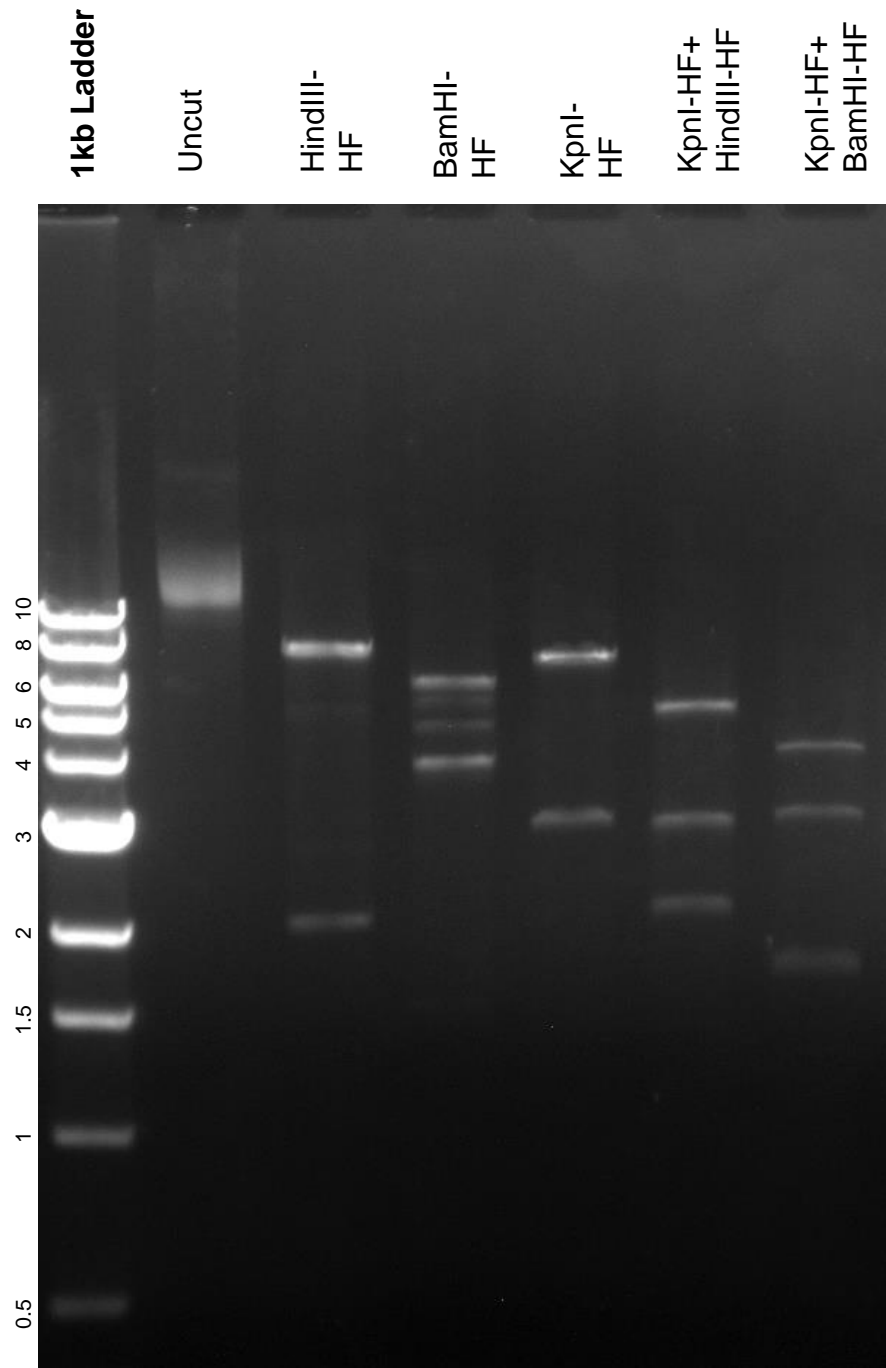


This gel depicts the NEB 1kb ladder and a digestion of the plasmid 35964 with the following enzymes: HindIII-HF, BamHI-HF, KpnI-HF

**Plasmid 35964
pHHSDKXK (#19)**



DNA digested with HindIII-HF BamHI-HF, KpnI-HF single digest and KpnI-HF+HindIII-HF, KpnI-HF+BamHI-HF double digest for **2 hours**
Gel: 1% TAE pre-stained with 4 uL of ethidium bromide
Ran for 2 hours at **100** volts