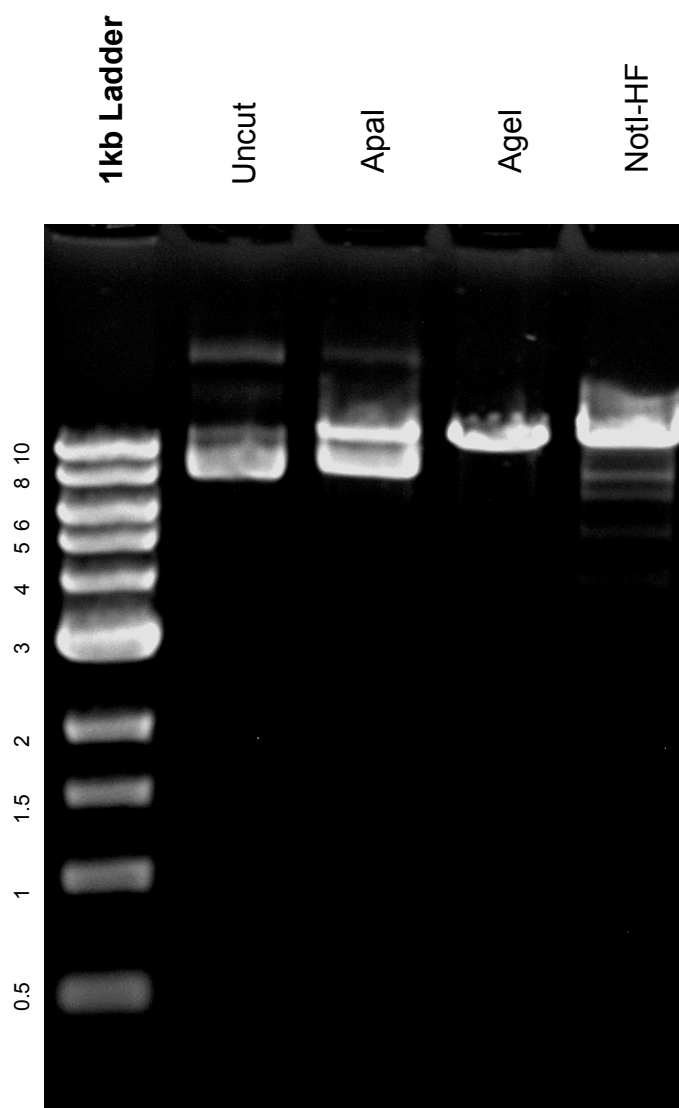


This gel depicts the NEB 1kb ladder and a digestion of the plasmid 37188 with the following enzymes: Apal, AgeI, and NotI-HF

**Plasmid 37188  
pCMV-Tag2B EDD**



DNA digested with BamHI-HF single, HindIII-HF single, and BamHI-HF+HindIII-HF double digest for **2 hours**

Gel: 0.8% TAE stained with 100 ml 1X TAE and 5uL of ethidium bromide

Ran for 2.5 hours at **47** volts