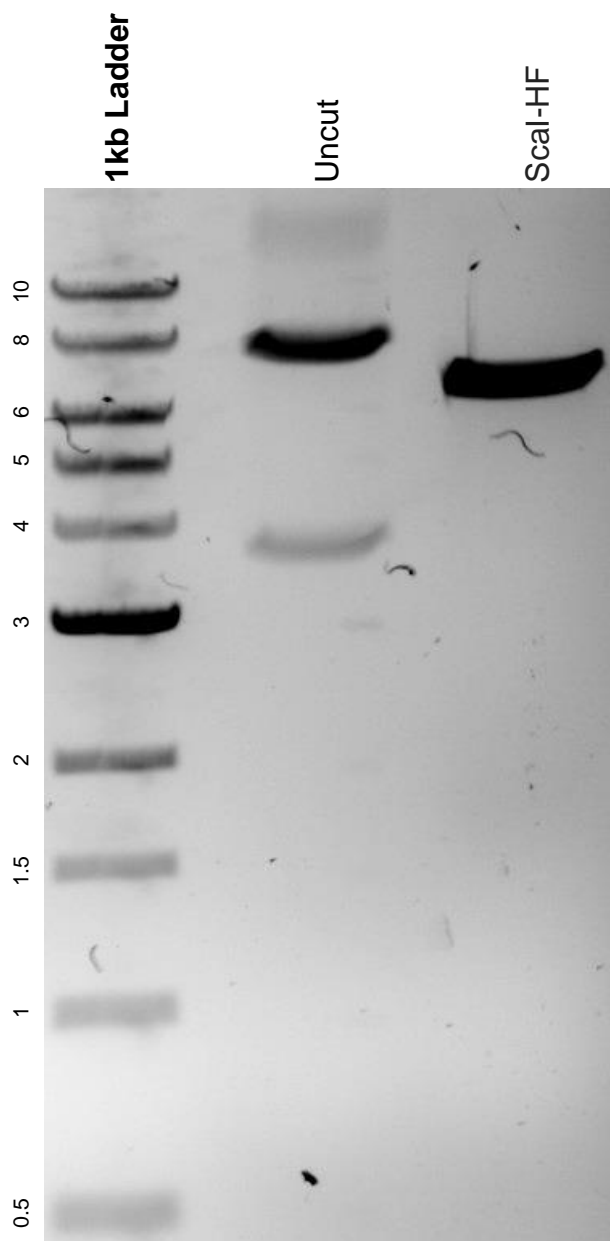


This gel depicts the NEB 1kb ladder and a digestion of the plasmid pMDR1-1202 with the following enzyme(s): Scal-HF.

Plasmid 37627:
pMDR1-1202



DNA digested with a Scal-HF single digest for **2 hours**.
Gel: 0.8% agarose stained with 5 uL of SYBR Safe.
Ran for 1.5 hours at 100 volts.