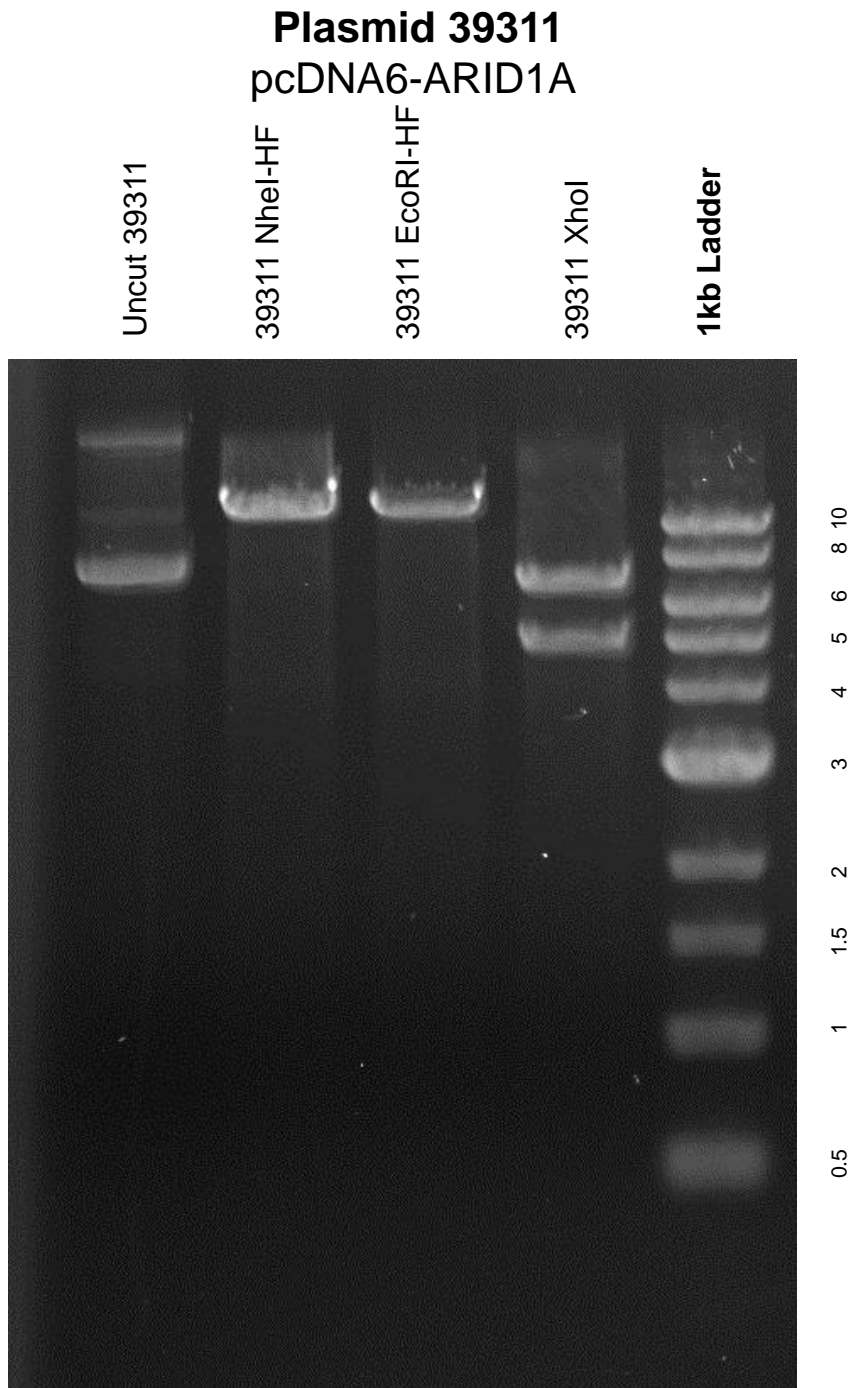


This gel depicts the NEB 1kb ladder and a digestion of the plasmid 39311 with the following enzymes: NheI-HF single digest, EcoRI-HF single digest, XhoI single digest



DNA digested with NheI-HF single digest, EcoRI-HF single digest, XhoI single digest for **2 hours**

Gel: 0.8% TAE stained with 100 ml 1X TAE and 5uL of ethidium bromide
Ran for 2.5 hours at **47** volts