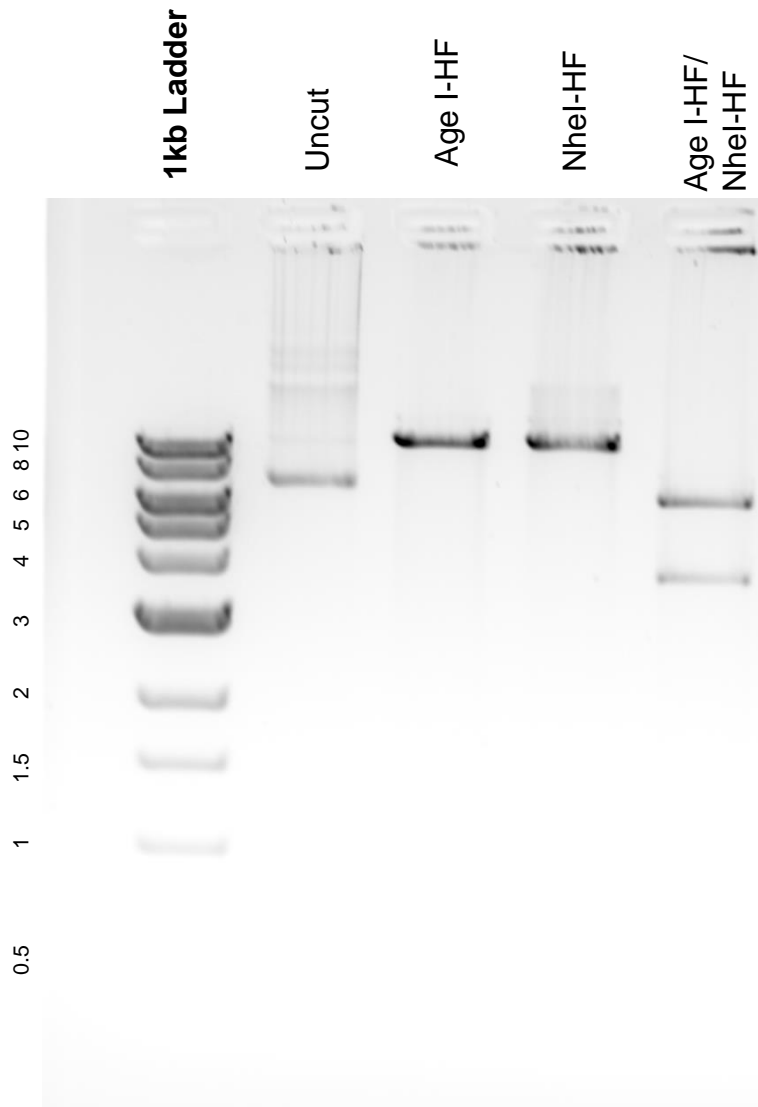


This gel depicts the NEB 1kb ladder and a digestion of the plasmid perbB2-EGFP with the following enzymes: AgeI-HF and NheI-HF.

Plasmid #: 39321
perbB2-EGFP



DNA digested with AgeI-HF single digest, NheI-HF single digest, and AgeI-HF/NheI-HF double digest for **2 hours**.

Gel: 0.8% agarose stained with 5 uL of ethidium bromide.

Ran for 2.5 hours at 60 volts.