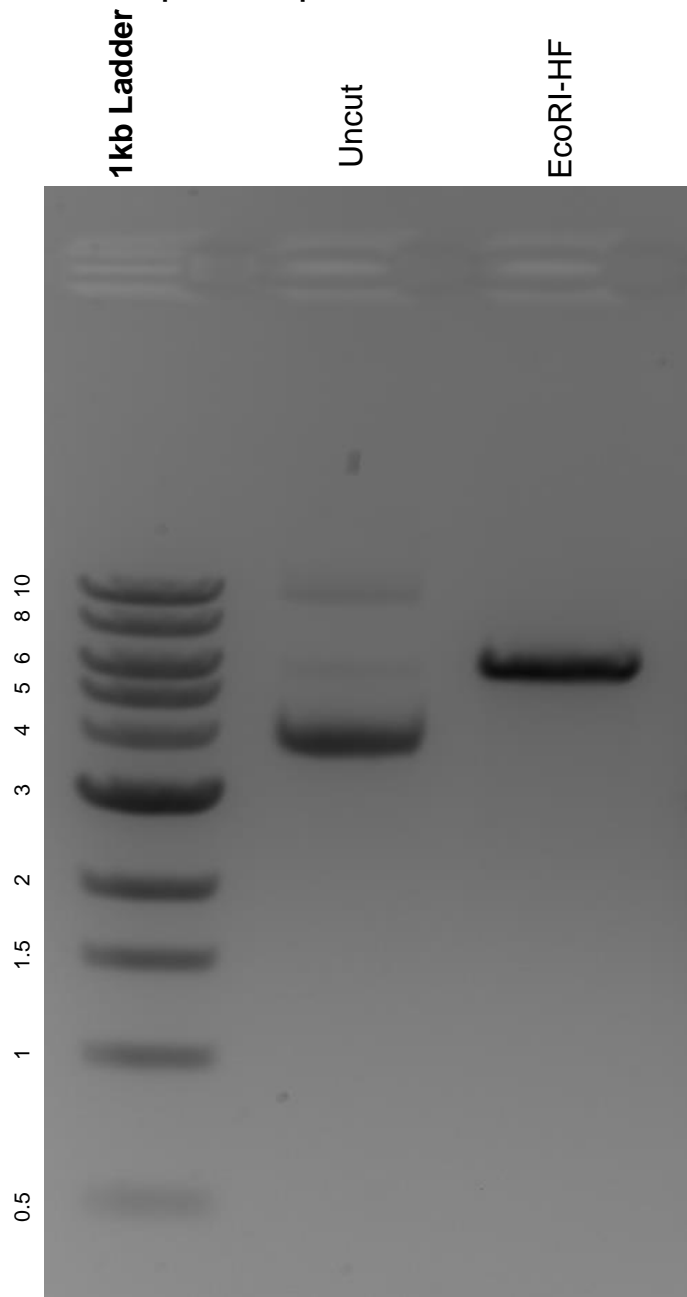


This gel depicts the NEB 1kb ladder and a digestion of the plasmid pBABEpuro-H-RAS_V12 with the following enzymes: EcoRI-HF.

Plasmid 39526:
pBABEpuro-H-RAS_V12



DNA digested with EcoRI-HF single digest for **2 hours**.
Gel: 0.8% agarose stained with 5 uL of ethidium bromide.
Ran for 1.5 hours at 100 volts.