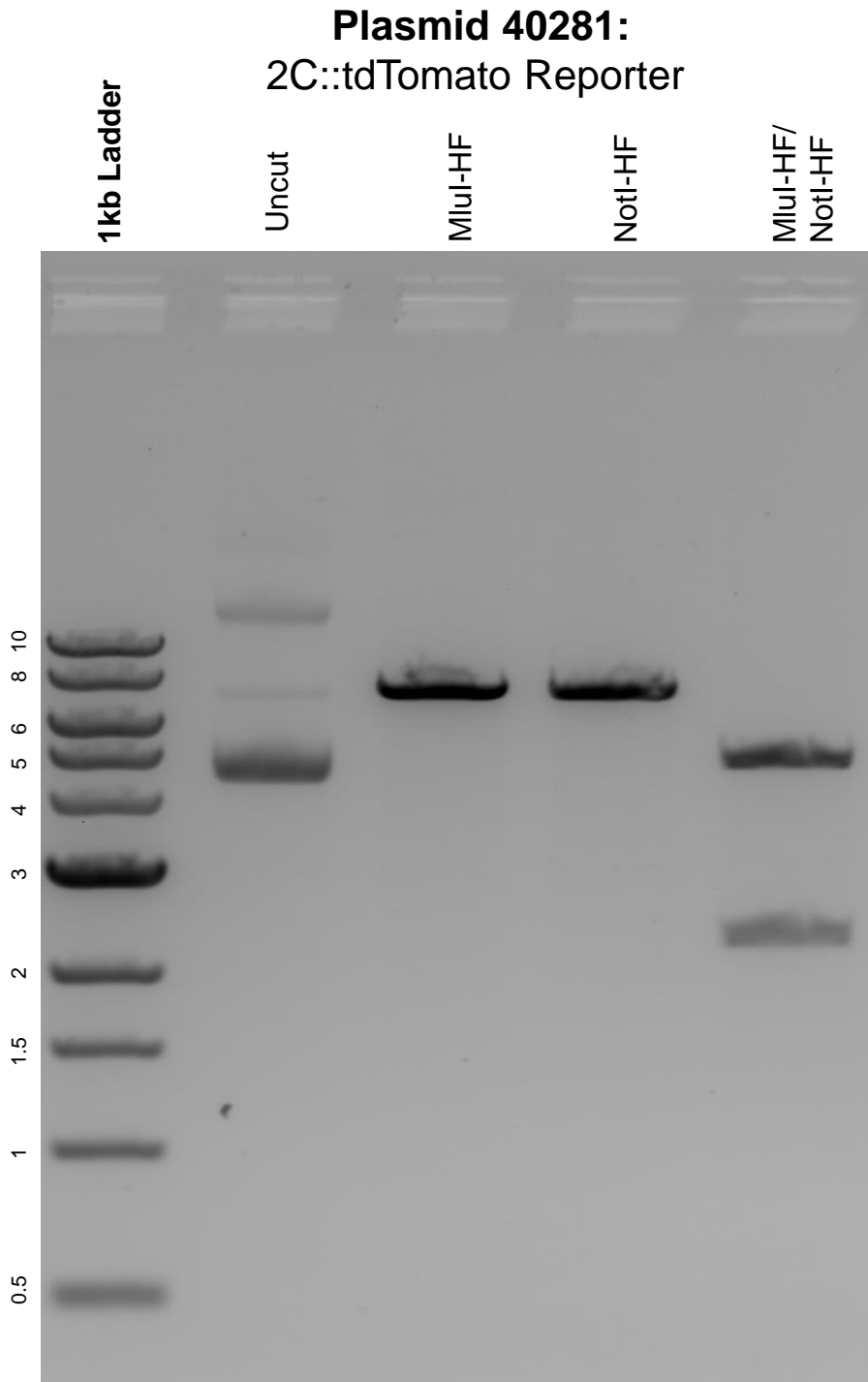


This gel depicts the NEB 1kb ladder and a digestion of the plasmid 2C::tdTomato Reporter with the following enzymes: MluI-HF and NotI-HF.



DNA digested with MluI-HF and NotI-HF single digests and MluI-HF/NotI-HF double digest for **2 hours**.

Gel: 0.8% agarose stained with 5 uL of ethidium bromide.

Ran for 2 hours at 80 volts.