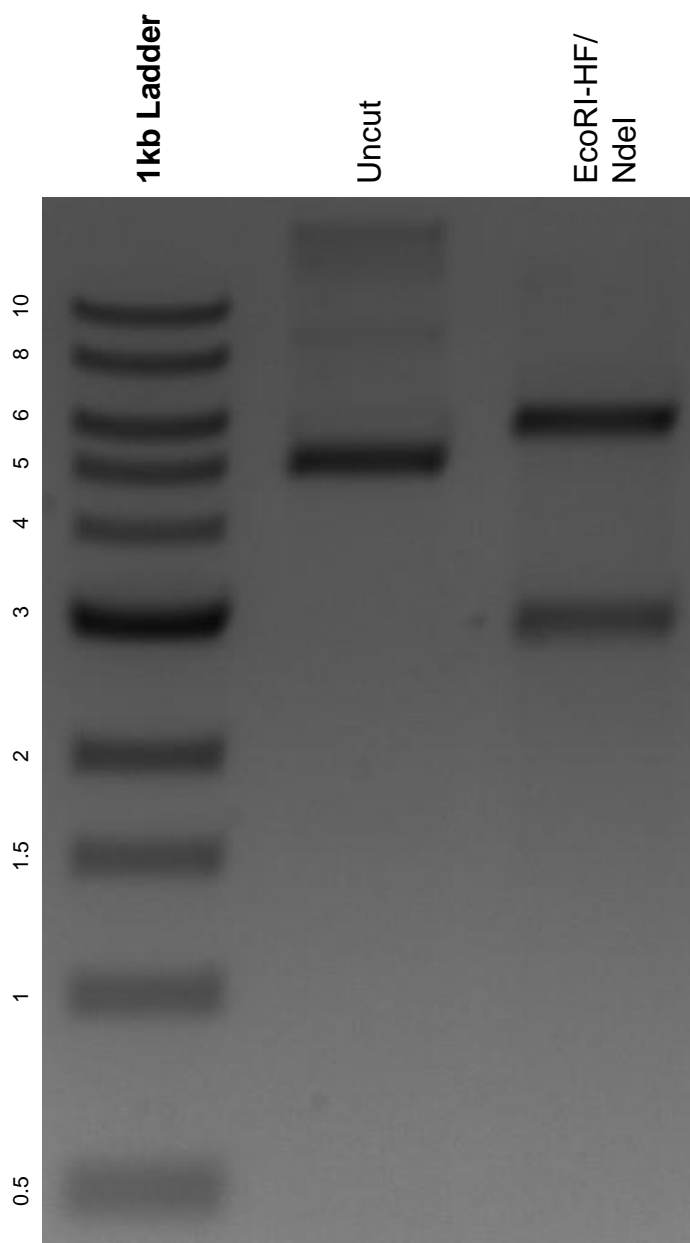


This gel depicts the NEB 1kb ladder and a digestion of the plasmid pCW57.1 with the following enzymes: EcoRI-HF and NdeI.

Plasmid 41393:
pCW57.1



DNA digested with EcoRI-HF/ NdeI double digest for **2 hours**.

Gel: 0.8% agarose stained with 6 uL of ethidium bromide.

Ran for 1.5 hours at 100 volts.