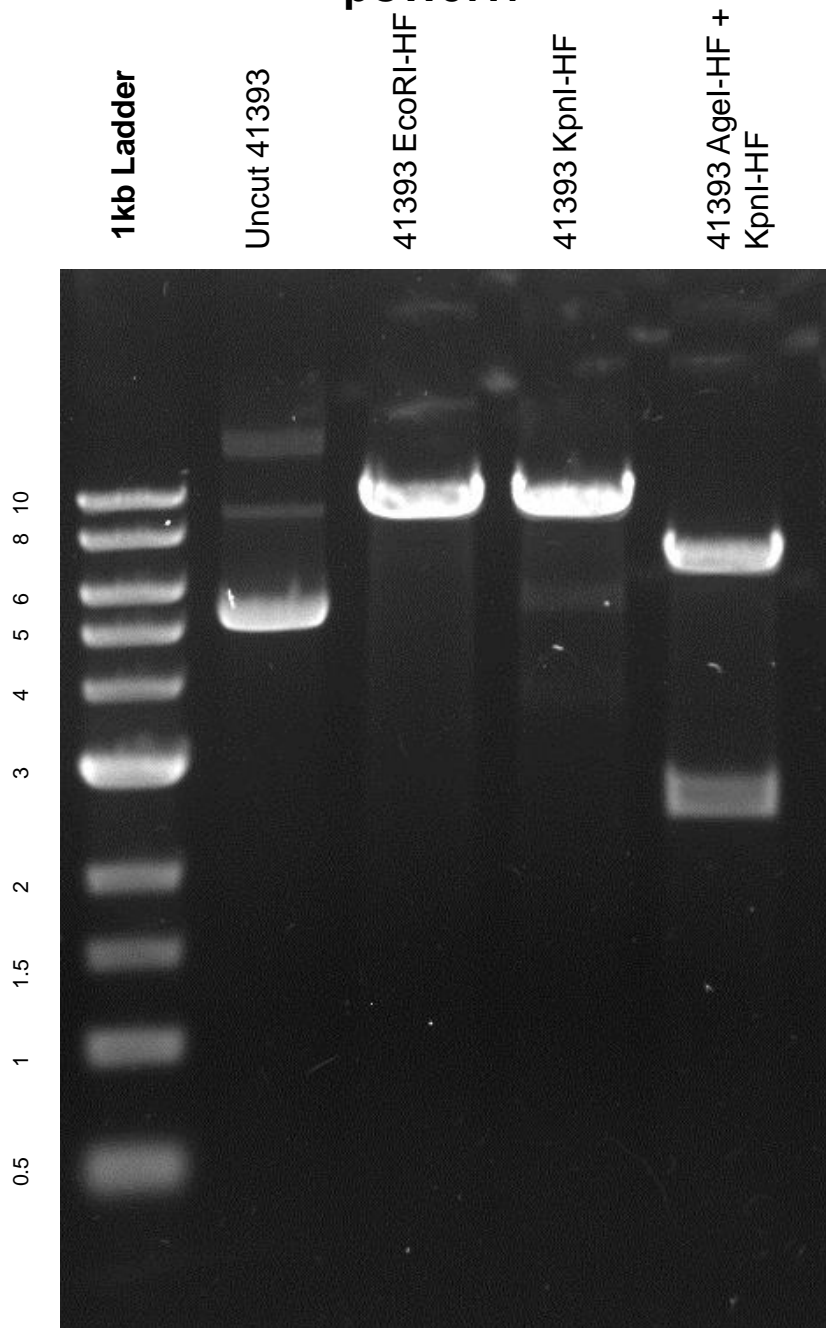


This gel depicts the NEB 1kb ladder and a digestion of the plasmid 41393 with the following enzymes: EcoRI-HF single digest, KpnI-HF single digest, and AgeI-HF + KpnI-HF double digest.

### Plasmid 41393

#### pCW57.1



DNA digested with EcoRI-HF single digest, NotI-HF single digest, AgeI-HF + KpnI -HF for **1.5 hours**

Gel: 0.8% TAE stained with 100 ml 1X TAE and 5uL of ethidium bromide

Ran for 2 hours at **47** volts