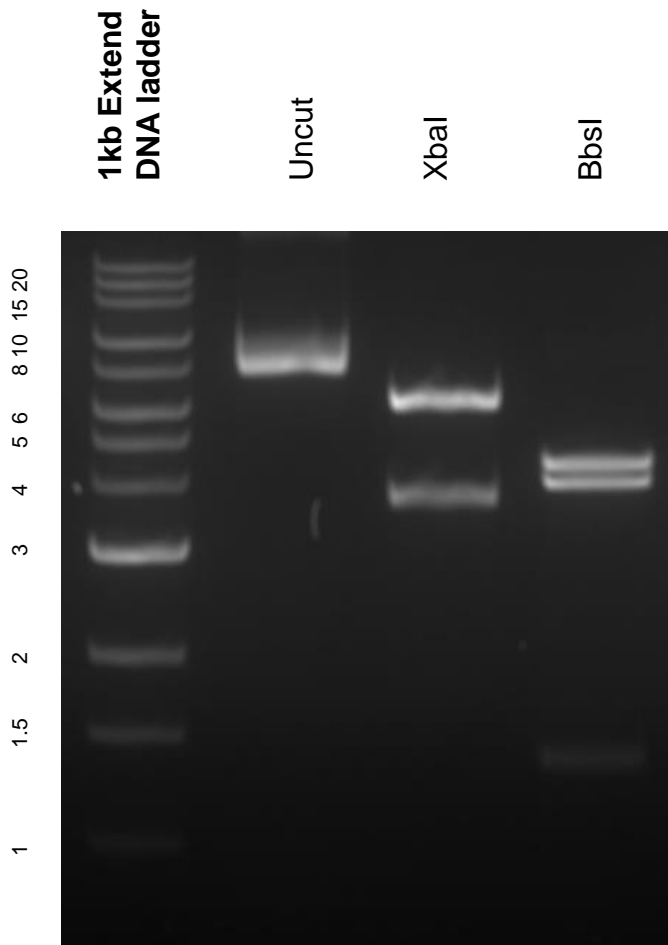


This gel depicts the NEB 1kb extend DNA ladder and a digestion of plasmid 41856 with XbaI and BbsI.

**Plasmid 41856:
pCE-mp53DD**



DNA digested with XbaI and BbsI for 3 hours.

Gel: 1% agarose stained with ethidium bromide. Run for 100 minutes at 100 volts.