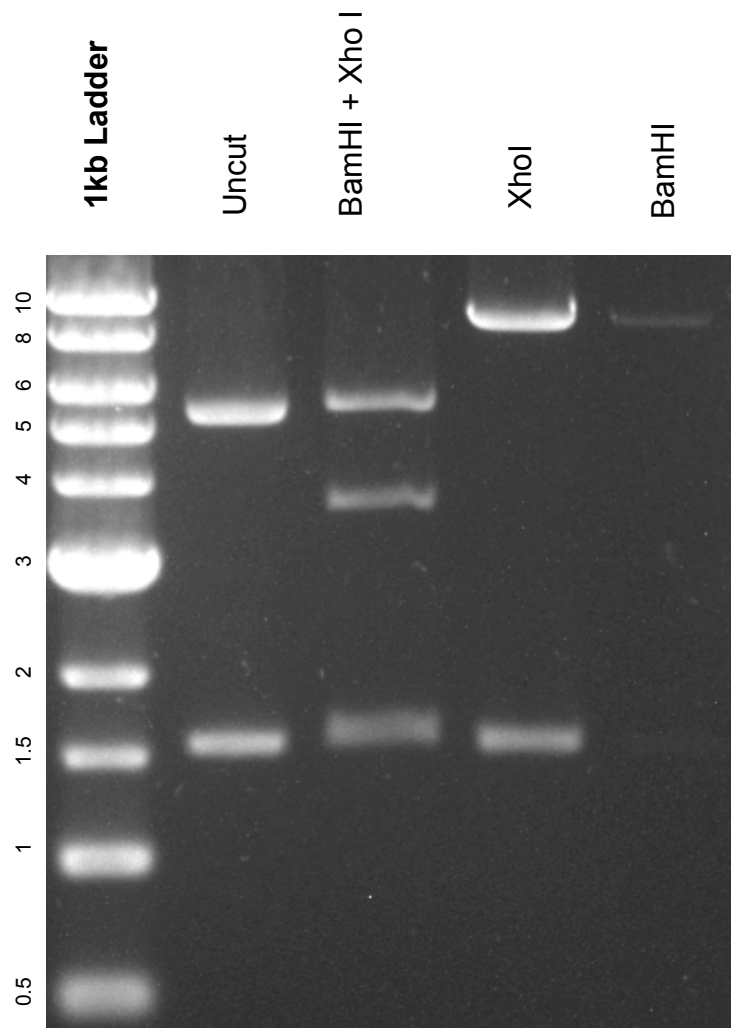


This gel depicts the NEB 1kb ladder and a digestion of the plasmid 41904 the following enzymes: BamHI + XhoI, XhoI, and BamHI

Plasmid 41904 LPC-flag-REST-FS



DNA digested with BamHI + XhoI double digest, XhoI single digest, and BamHI single digest for **2 hours**

Gel: 0.8% TAE stained with 100 ml 1X TAE and 5uL of ethidium bromide

Ran for 2.5 hours at **47 volts**