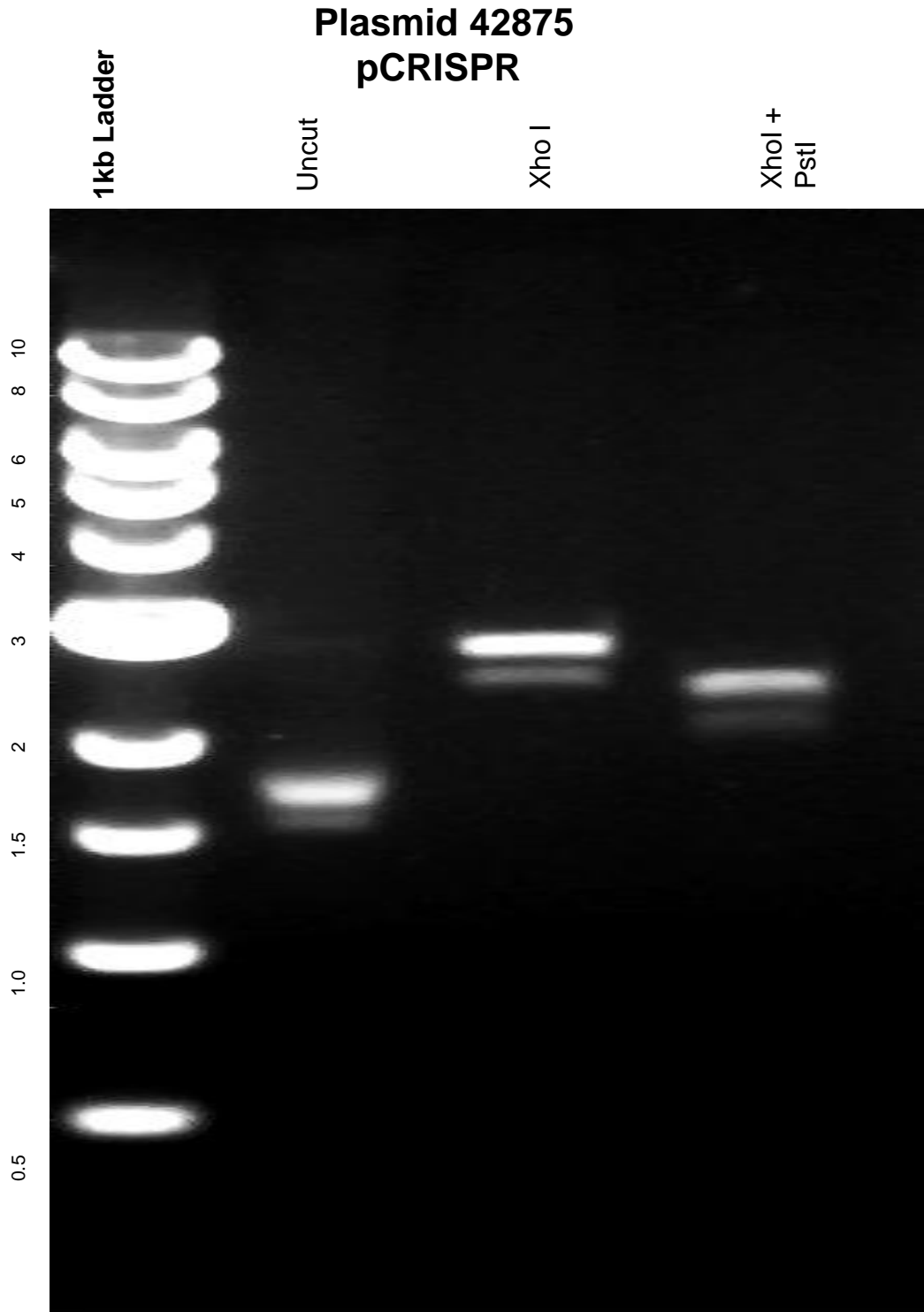


This gel depicts the NEB 1kb ladder and a digestion of the plasmid 42875 with the following enzymes: XhoI and XhoI+PstI



DNA digested with xho I single digest, and XhoI + PstI Double digest for **2 hours**
Gel: 0.8% TAE pre-stained with 5 uL of ethidium bromide
Ran for 2.5 hours at **72 volts**