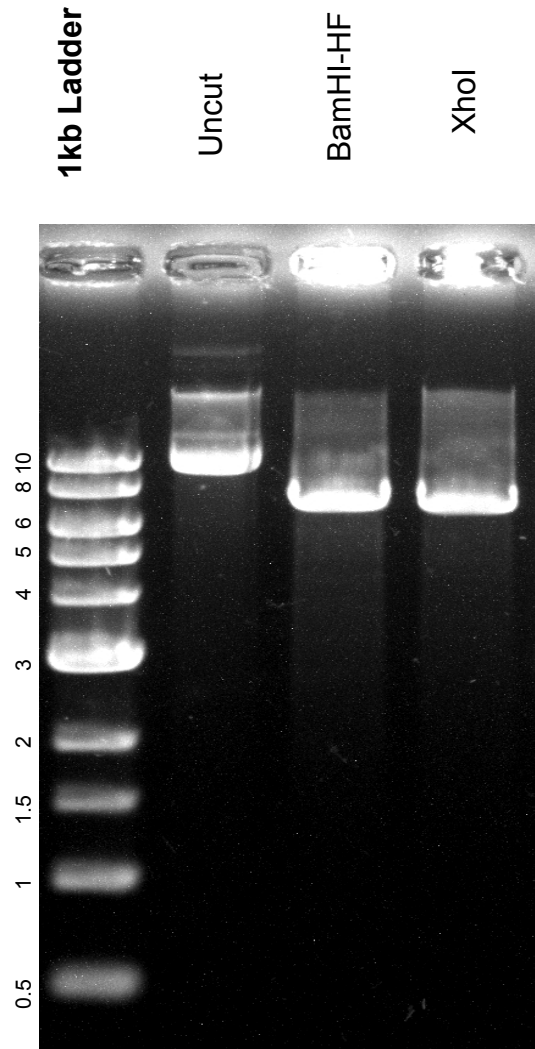


This gel depicts the NEB 1kb ladder and a digestion of the plasmid 43796 with the following enzymes: BamHI-HF. XhoI

Plasmid 43796 pDawn



DNA digested with BamHI-HF single and XhoI single digest for **2 hours**
Gel: 0.8% TAE stained with 100 ml 1X TAE and 5uL of ethidium bromide
Ran for 2.5 hours at **47 volts**