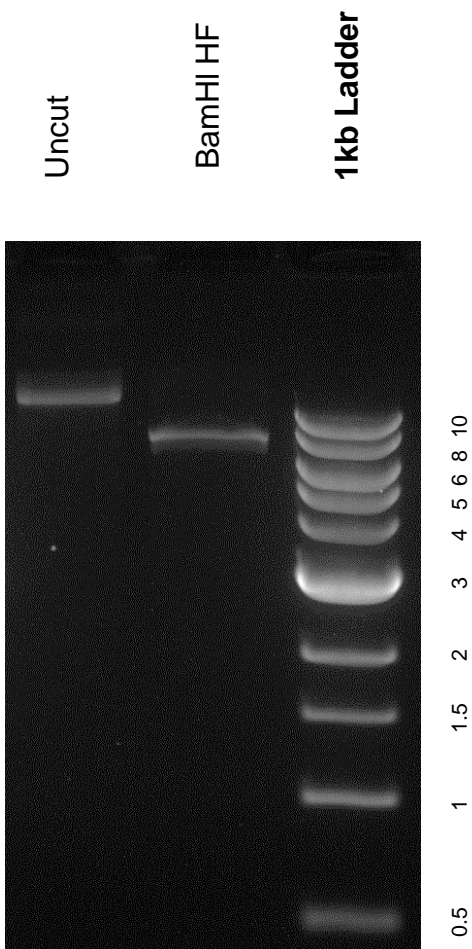


This gel depicts the NEB 1kb ladder and a digestion of the plasmid Active Wnt1-V5 with the following enzymes: BamHI HF

Plasmid 43807
Active Wnt1-V5



DNA digested with BamHI HF single for **2 hours**

Gel: 0.8% TAE stained with 100 ml 1X TAE and 3uL of ethidium bromide

Ran for 2 hours at 47 volts