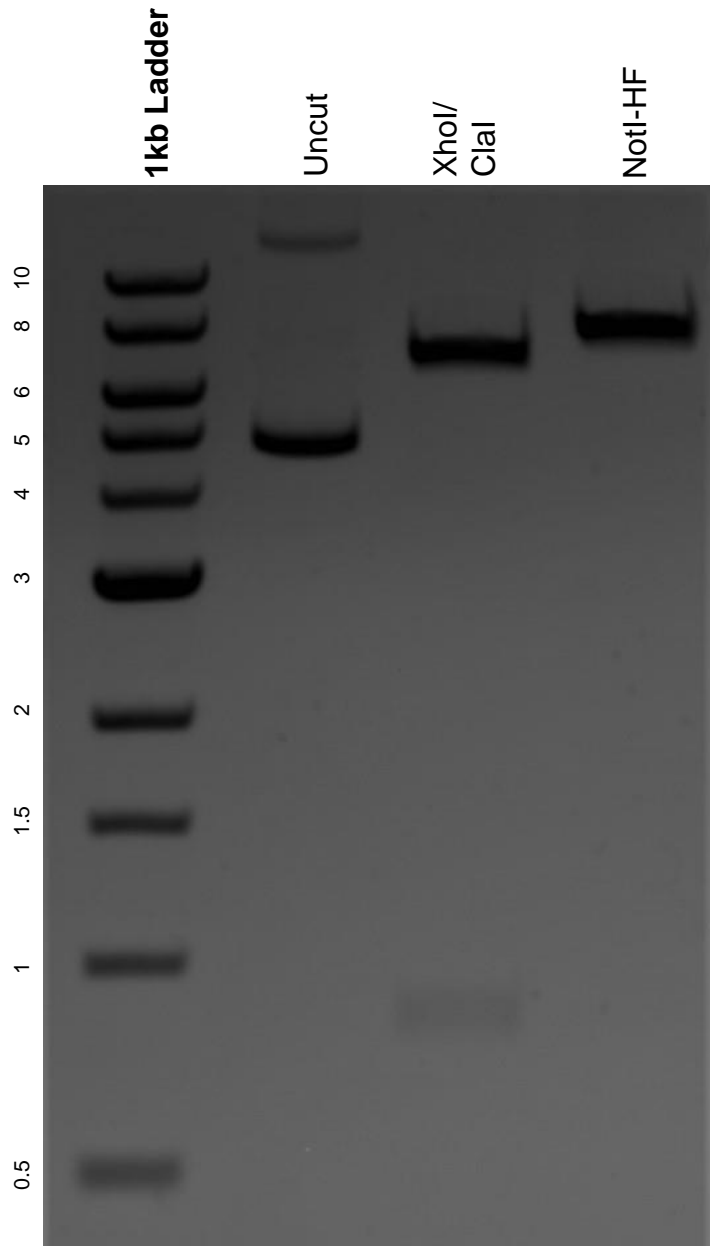


This gel depicts the NEB 1kb ladder and a digestion of the plasmid pCIG-V5-Snail2-IRES-nls-GFP with the following enzymes: XhoI, ClaI, and NotI-HF.

Plasmid 44282:
pCIG-V5-Snail2-IRES-nls-GFP



DNA digested with NotI-HF single digest and XhoI/ ClaI double digest for **2 hours**.
Gel: 0.8% agarose stained with 6 uL of ethidium bromide.
Ran for 1.5 hours at 100 volts.