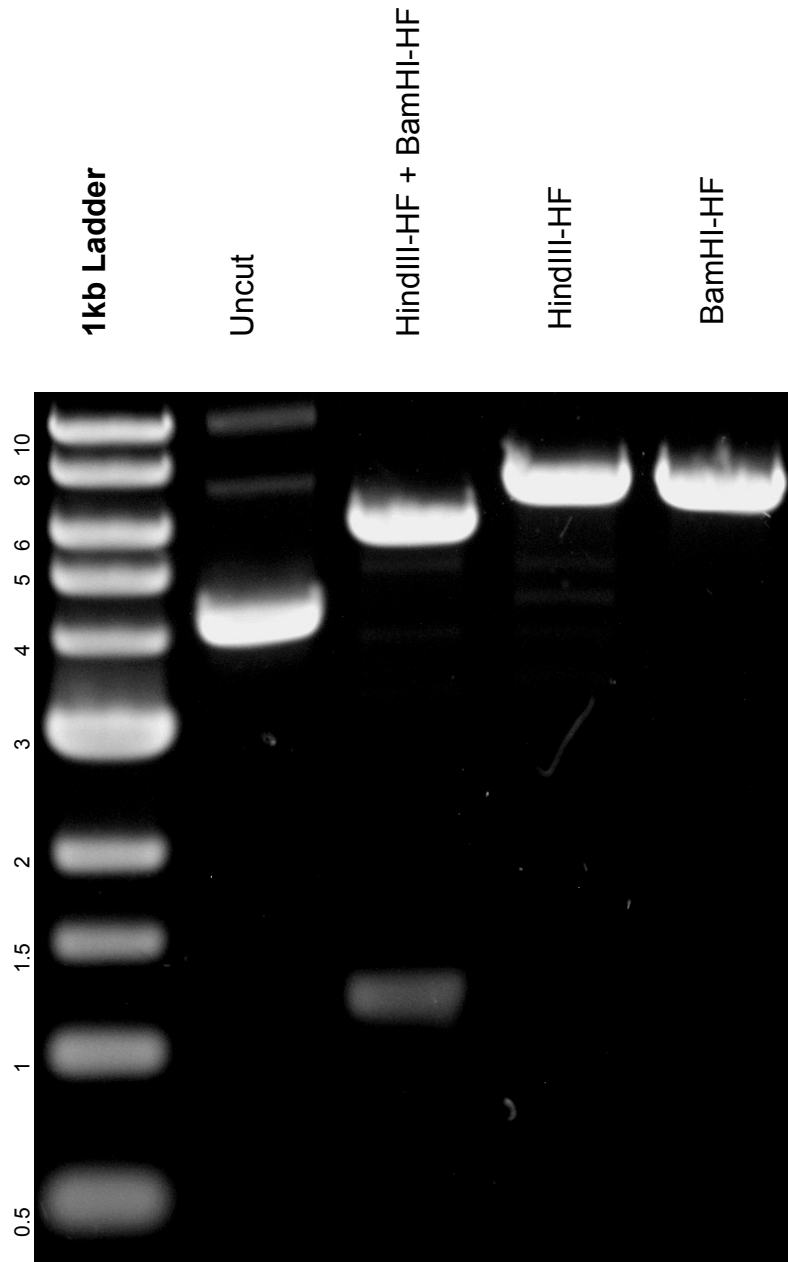


This gel depicts the NEB 1kb ladder and a digestion of the plasmid 45203 with the following enzymes: HindIII-HF, BamHI-HF, and HindIII-HF+ BamHI-HF

Plasmid 45203
Plk1 FRET sensor c-jun substrate



DNA digested with BamHI-HF single, HindIII-HF single, and BamHI-HF+HindIII-HF double digest for **2 hours**

Gel: 0.8% TAE stained with 100 ml 1X TAE and 5uL of ethidium bromide

Ran for 2.5 hours at **47 volts**