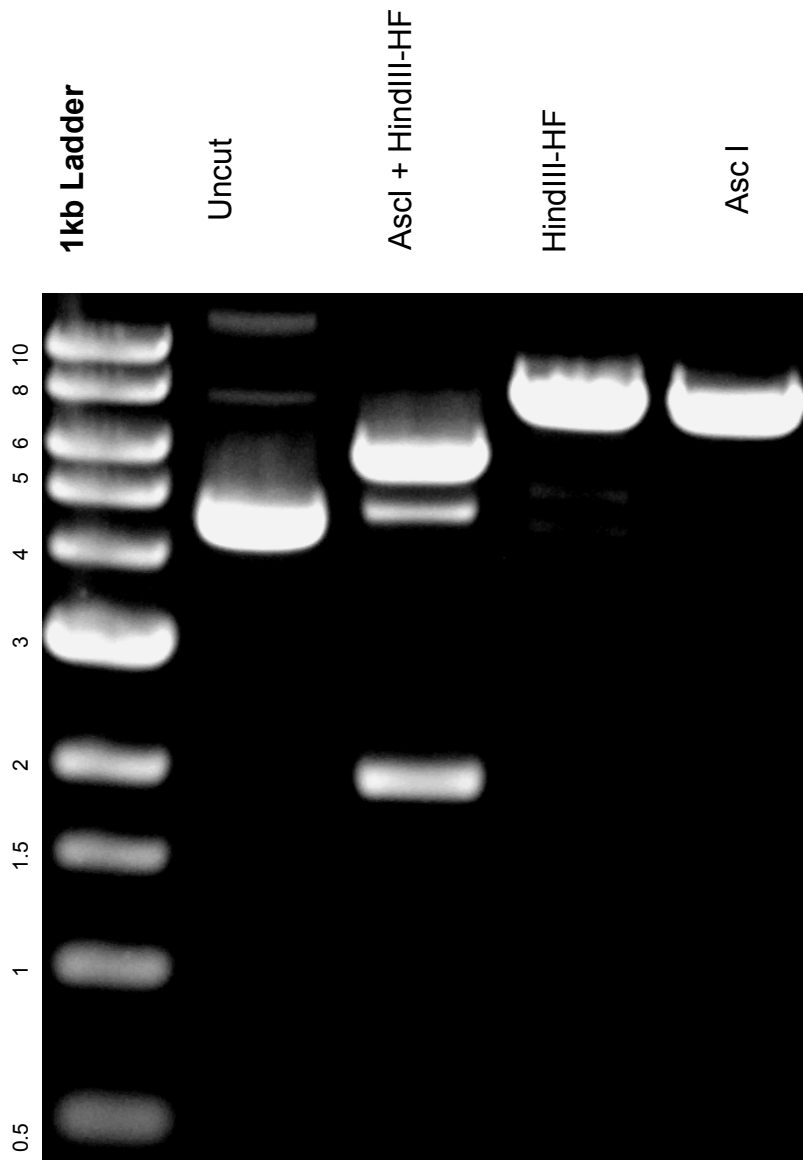


This gel depicts the NEB 1kb ladder and a digestion of the plasmid 45204 with the following enzymes: AscI, HindIII-HF, AscI + HindIII-HF

Plasmid 45204
N-term Hec1 Plk1 FRET
sensor c-jun substrate



DNA digested with Asc I single digest, HindIII-HF single digest, and AscI + HindIII-HF double digest for **2 hours**

Gel: 0.8% TAE stained with 100 ml 1X TAE and 5uL of ethidium bromide

Ran for 2.5 hours at **47 volts**