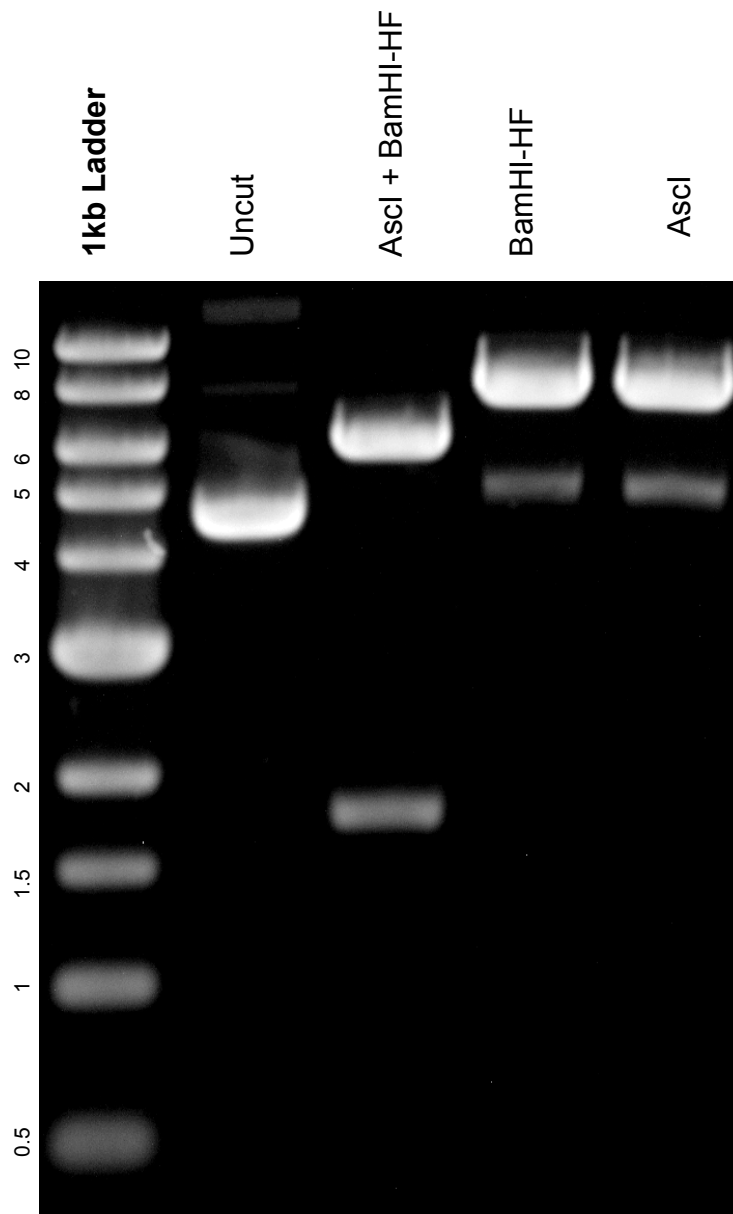


This gel depicts the NEB 1kb ladder and a digestion of the plasmid 45214 with the following enzymes: Ascl, BamHI-HF, and Ascl+ BamHI-HF

Plasmid 45214
CENP-B targeted Aurora B FRET
sensor Kif2 substrate



DNA digested with BamHI-HF single, Ascl single, and BamHI-HF+Ascl double digest for **2 hours**

Gel: 0.8% TAE stained with 100 ml 1X TAE and 5uL of ethidium bromide

Ran for 2.5 hours at **47 volts**