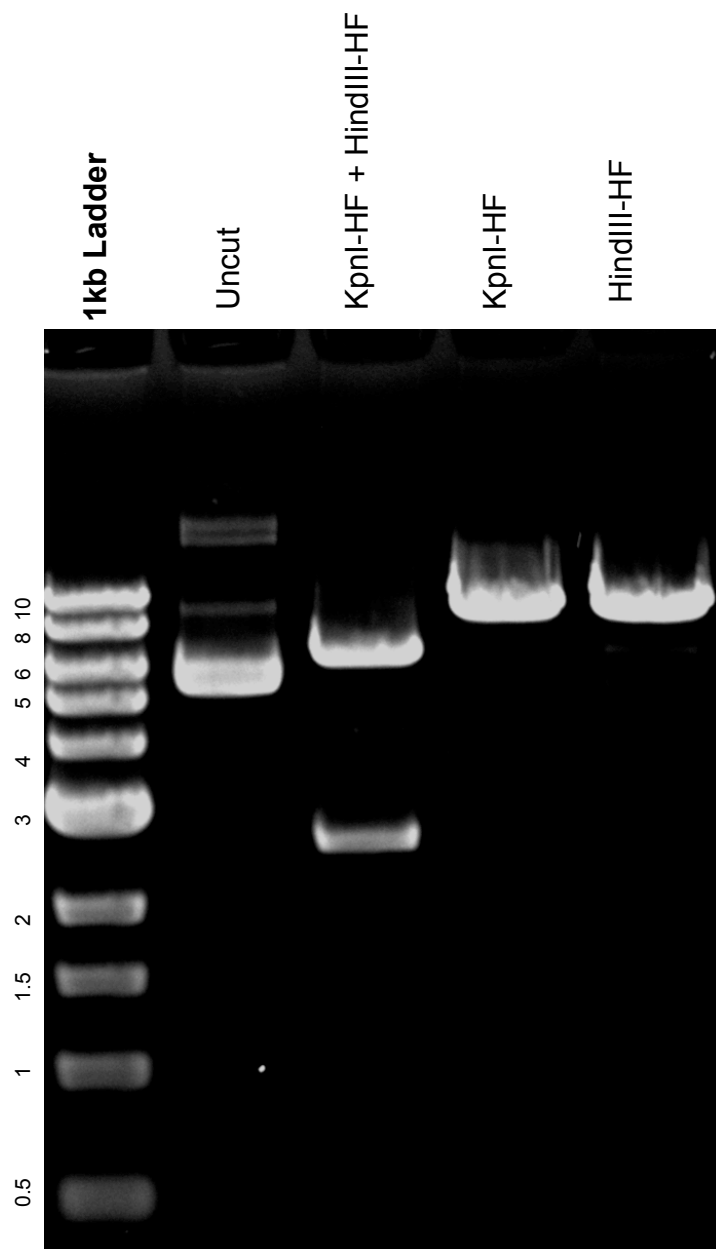


This gel depicts the NEB 1kb ladder and a digestion of the plasmid 45222 with the following enzymes: HindIII-HF, KpnI-HF, HindIII-HF + KpnI-HF

Plasmid 45222
C-term Hec1-targeted Aurora B FRET sensor



DNA digested with Kpn-1HF single, HindIII-HF single, and KpnI+HindIII-HF double digest for **2 hours**

Gel: 0.8% TAE stained with 100 ml 1X TAE and 5uL of ethidium bromide

Ran for 2.5 hours at **47 volts**