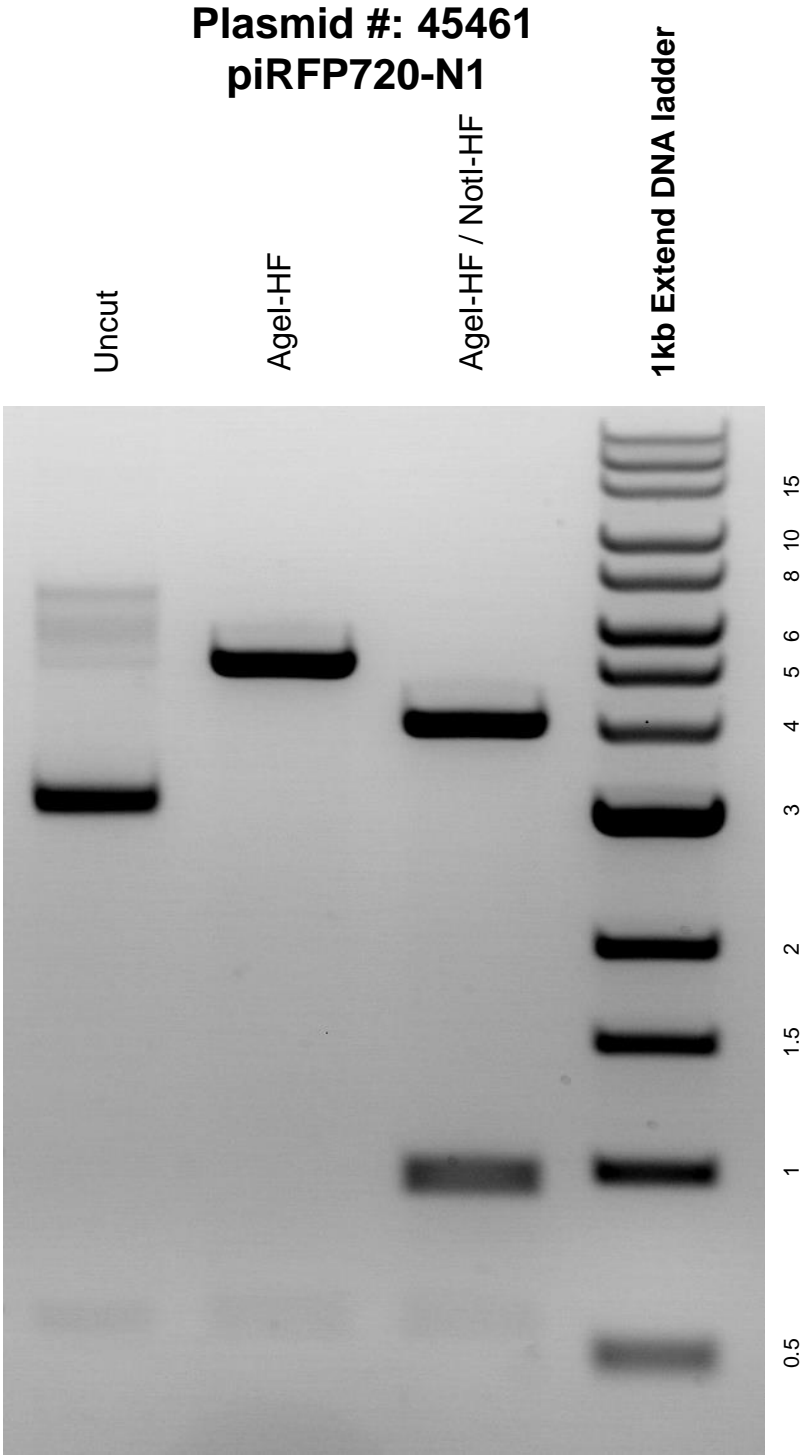


This gel depicts the NEB 1kb Extend DNA ladder and a digestion of plasmid 45461 with Agel-HF and NotI-HF.



DNA digested with Agel-HF single digest and Agel-HF / NotI-HF double digest for **2 hours**. Gel: 0.8% agarose stained with ethidium bromide. Run for 2 hours at 80 volts.