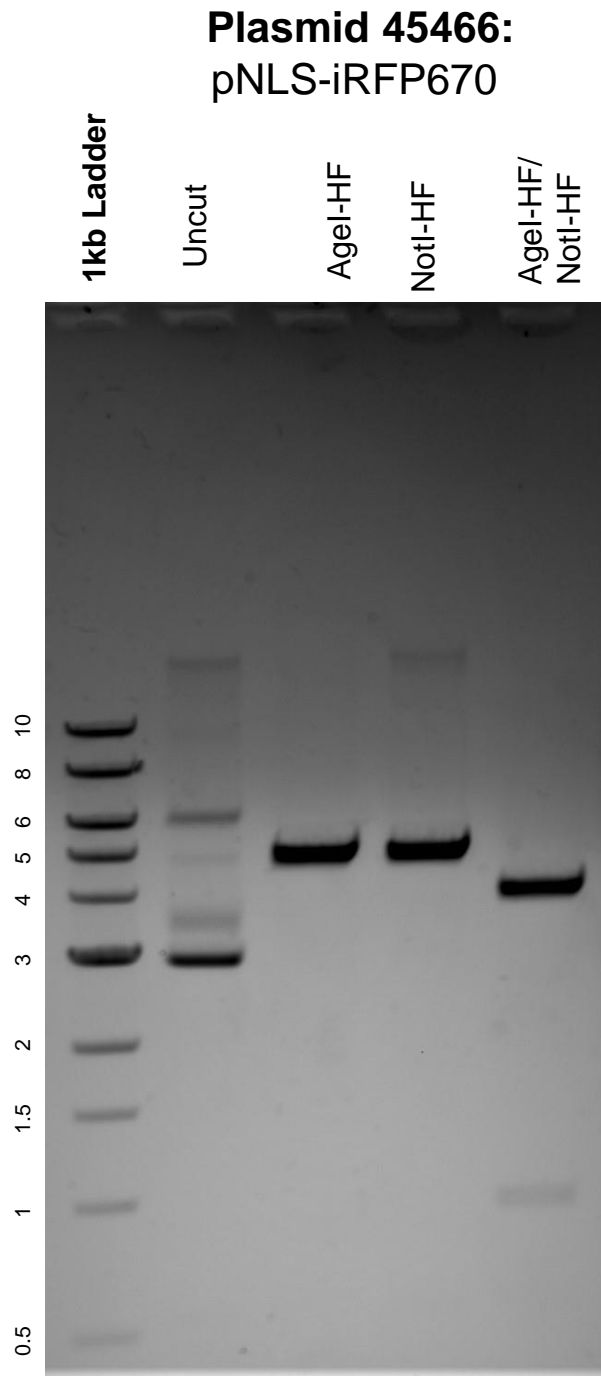


This gel depicts the NEB 1kb ladder and a digestion of the plasmid pNLS-iRFP670 with the following enzymes: AgeI-HF and NotI-HF.



DNA digested with AgeI-HF and NotI-HF single digests and AgeI-HF/ NotI-HF double digest for **2 hours**.

Gel: 0.8% agarose stained with 5 uL of ethidium bromide.

Ran for 1.5 hours at 100 volts.