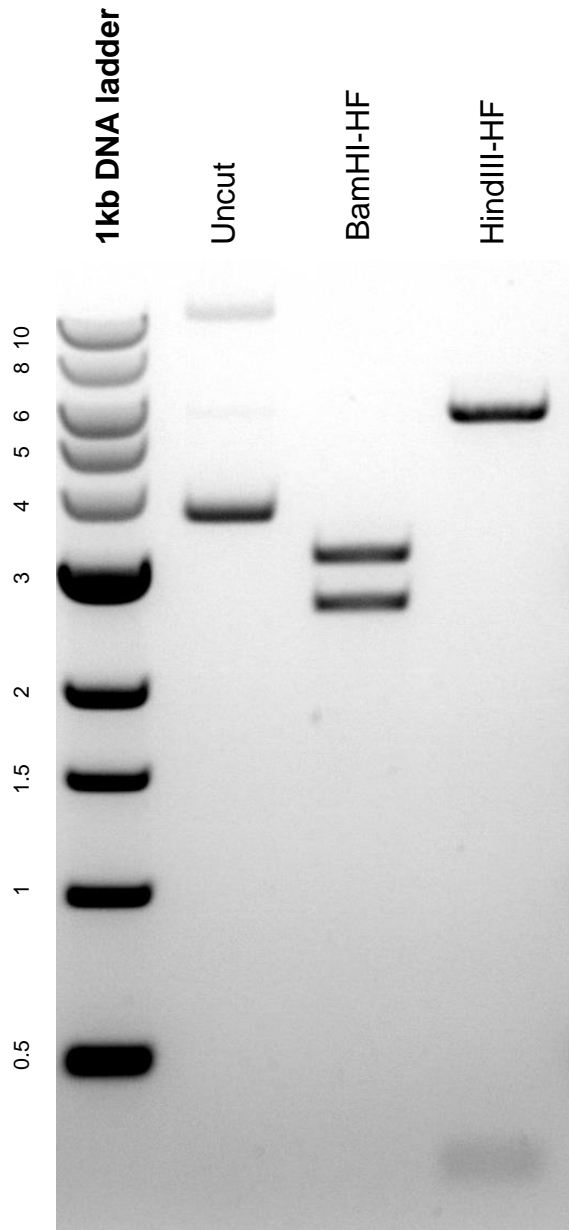


This gel depicts the NEB 1kb DNA ladder and a digestion of plasmid #45567 with the enzymes BamHI-HF and HindIII-HF.

Plasmid #: 45567



DNA digested with BamHI-HF single digest and HindIII-HF single digest for **2.5 hours**. Gel: 0.8% agarose stained with 5 uL of ethidium bromide. Ran for 2 hours at 80 volts.