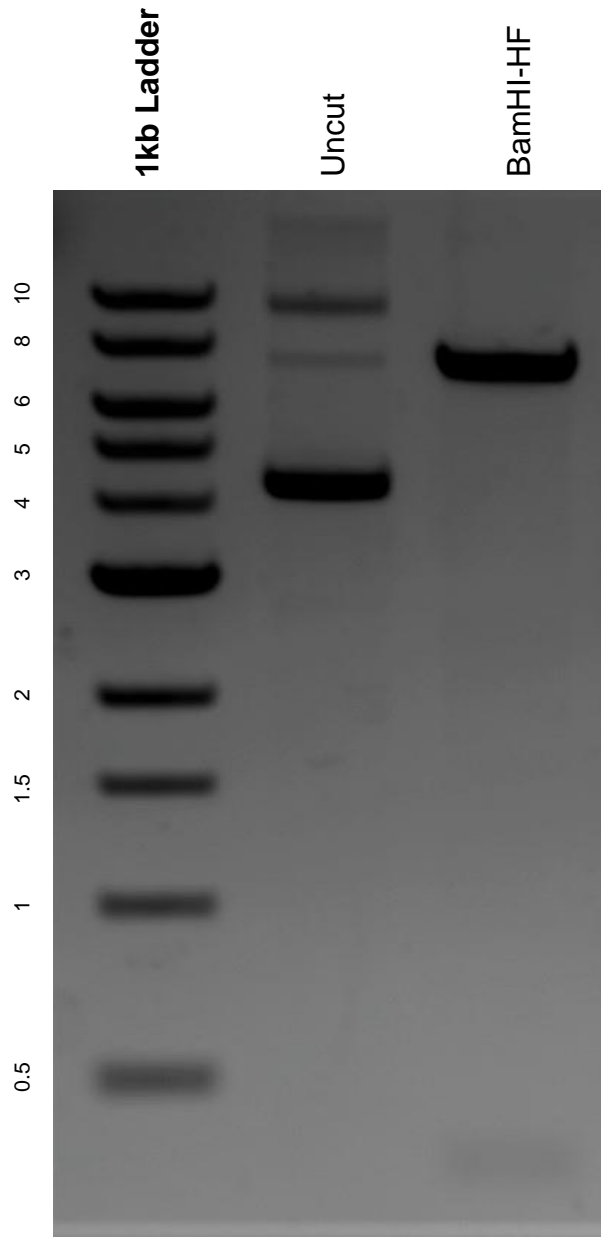


This gel depicts the NEB 1kb ladder and a digestion of the plasmid pCAG_PSD95.FingR-eGFP-CCR5TC with the following enzymes: BamHI-HF

Plasmid 46295:
pCAG_PSD95.FingR-eGFP-CCR5TC



DNA digested with BamHI-HF single digest for **2 hours**.
Gel: 0.8% agarose stained with 5 uL of ethidium bromide.
Ran for 1.5 hours at 100 volts.