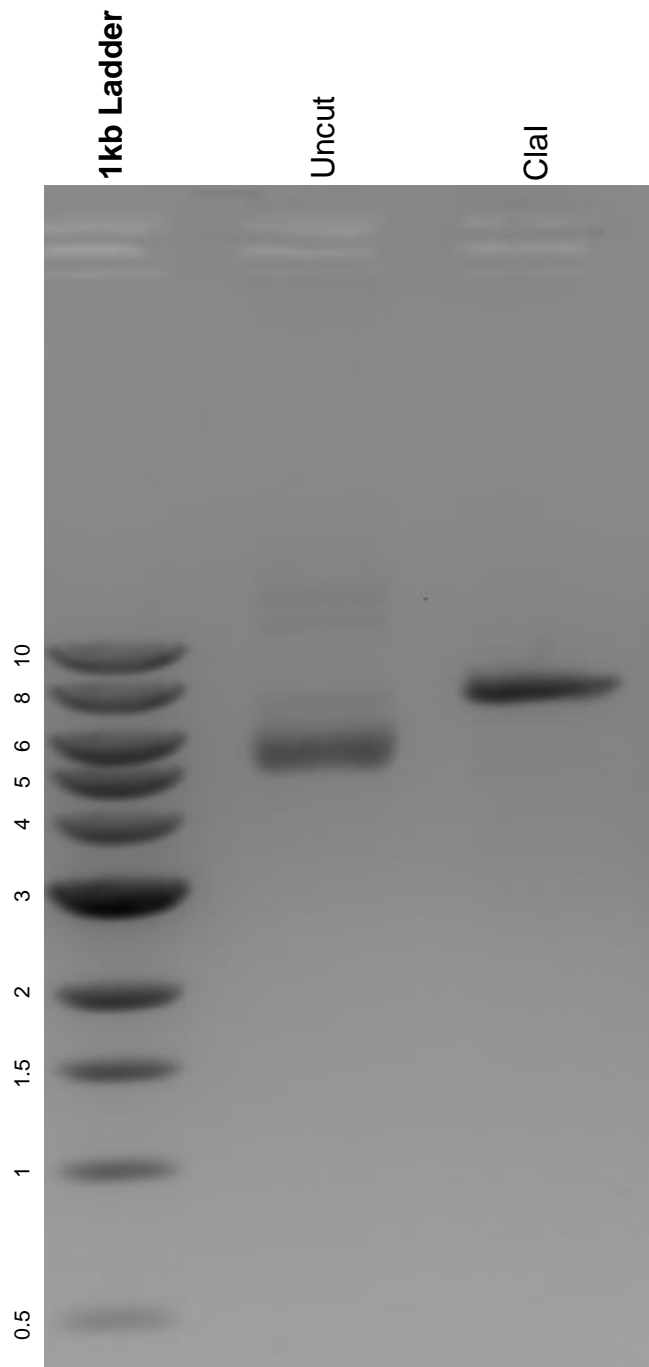


This gel depicts the NEB 1kb ladder and a digestion of the plasmid pBabe TIR1-9myc with the following enzyme: Clal.

Plasmid 47328:
pBabe TIR1-9myc



DNA digested with Clal single digest for **2 hours**.
Gel: 0.8% agarose stained with 5 uL of ethidium bromide.
Ran for 1.5 hours at 100 volts.