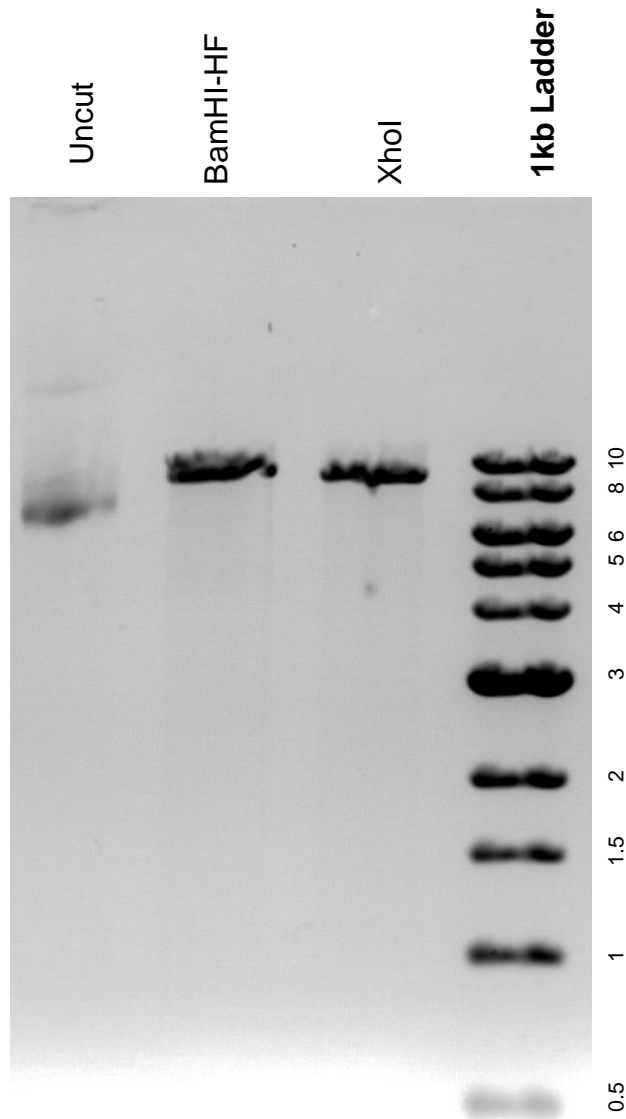


This gel depicts the NEB 1kb ladder and a digestion of the plasmid Tet-pLKO-puro-SOX2 with the following enzymes: BamHI-HF and XhoI.

Plasmid 47540:
Tet-pLKO-puro-SOX2



DNA digested with BamHI-HF and XhoI single digests for **2 hours**.
Gel: 0.8% agarose stained with 5 uL of ethidium bromide.
Ran for 2.5 hours at 60 volts.