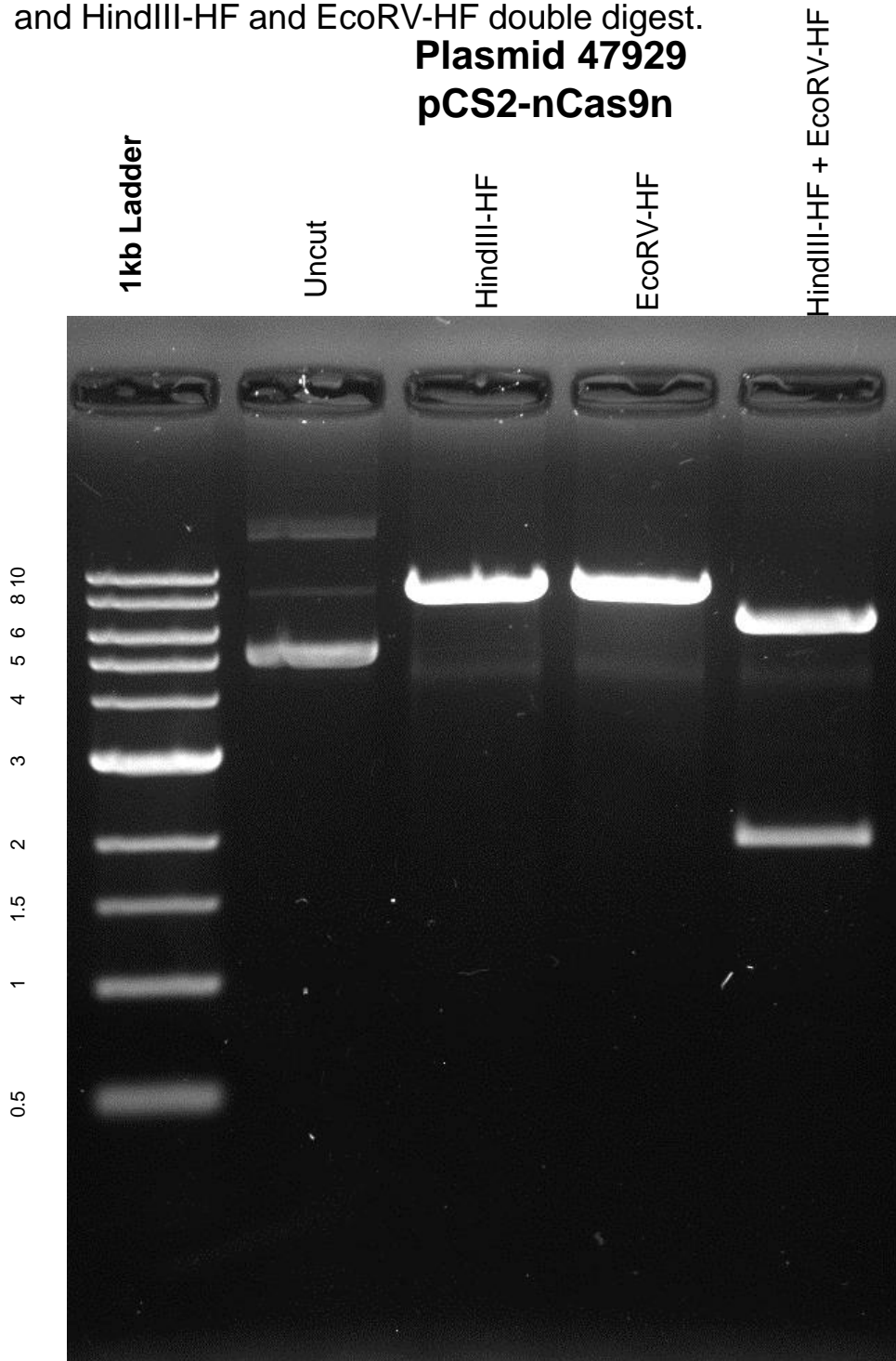


This gel depicts the NEB 1kb ladder and a digestion of the plasmid **pCS2-nCas9n** with the following enzyme: HindIII-HF, EcoRV-HF and HindIII-HF and EcoRV-HF double digest.

Plasmid 47929
pCS2-nCas9n



DNA digested with HindIII-HF, EcoRV-HF and HindIII-HF single and EcoRV-HF double digest for **2 hours**

Gel: 0.8% TAE stained with 100 ml 1X TAE and 5uL of ethidium bromide
Ran for 2 hours at **47** volts