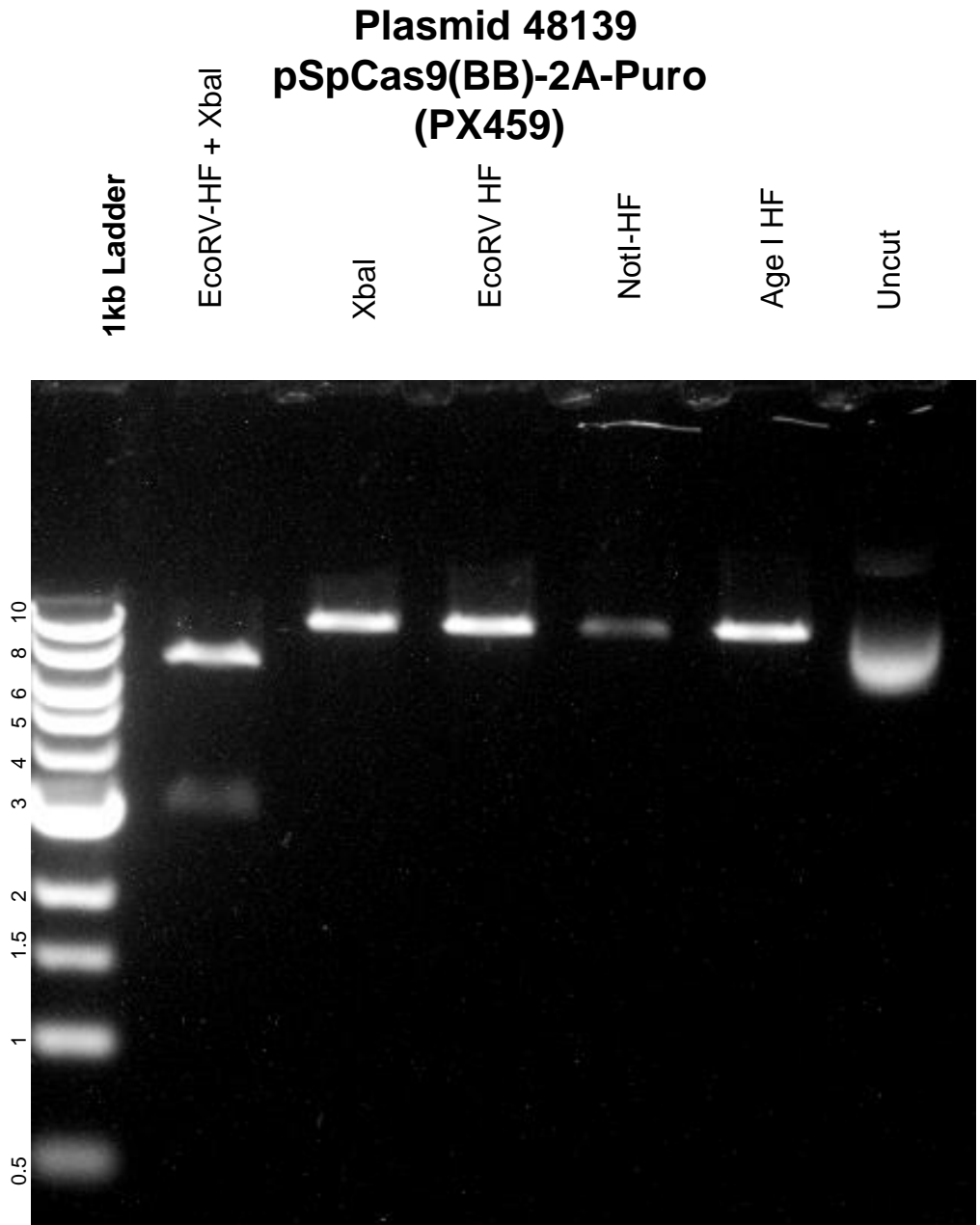


This gel depicts the NEB 1kb ladder and a digestion of the plasmid 48139 with the following enzymes: Age I HF, NotI HF, EcoRV HF, XbaI, EcoRVHf + XbaI



DNA digested with EcoRV, NotI, AgeI, XbaI single digest and EcoRV + XbaI double digest for **2 hours**

Gel: 0.8% TAE stained with 150 ml 1X TAE and 4 μ L of ethidium bromide

Ran for 1.5 hours at **84** volts