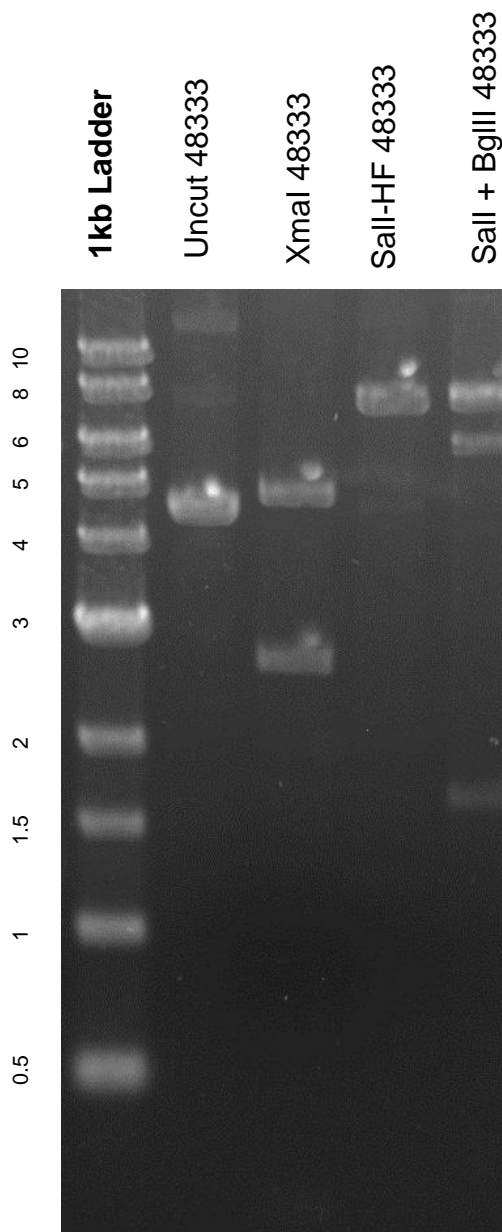


This gel depicts the NEB 1kb ladder and a digestion of the plasmid 48333 with the following enzymes: XmaI single digest, Sall-HF single digest, Sall+BglII double digest

**Plasmid 48333**  
**CAG-Flex-RG**



DNA digested with XmaI single digest, Sall-HF single digest, Sall+BglII double digest for **2 hours**

Gel: 0.8% TAE stained with 100 ml 1X TAE and 5uL of ethidium bromide

Ran for 4.25 hours at **47** volts