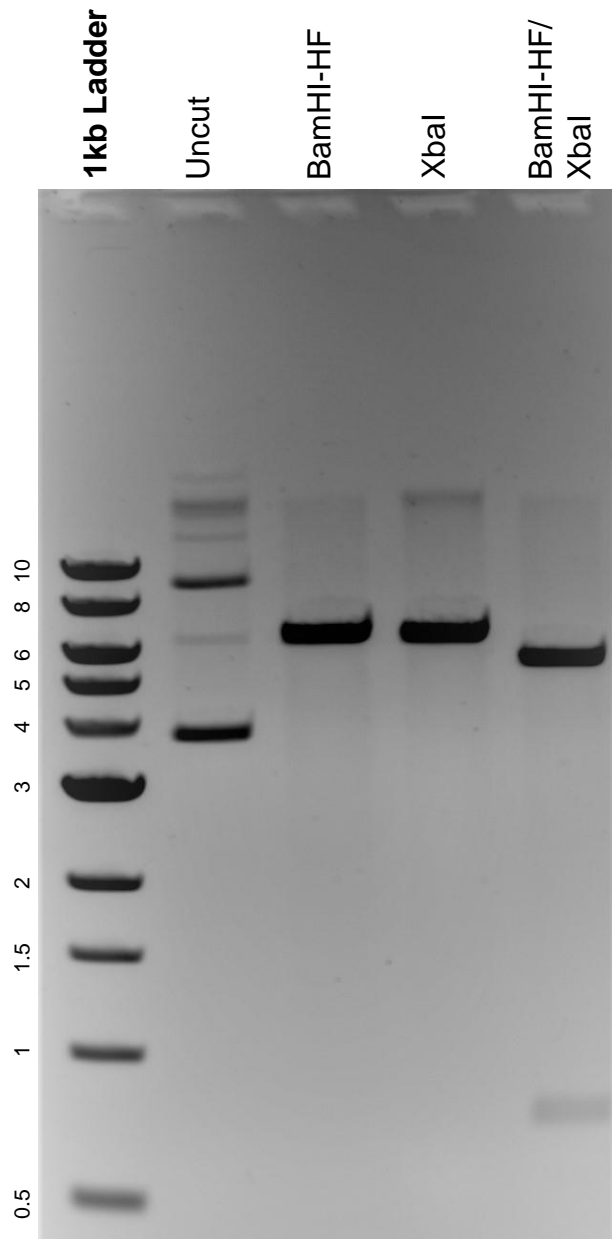


This gel depicts the NEB 1kb ladder and a digestion of the plasmid pET-15b-EK_C122S_His5 with the following enzymes: BamHI-HF and XbaI.

Plasmid 49048:
pET-15b-EK_C122S_His5



DNA digested with BamHI-HF and XbaI single digests and BamHI-HF/ XbaI double digest for **2 hours**.

Gel: 0.8% agarose stained with 6 uL of ethidium bromide.

Ran for 1.5 hours at 100 volts.