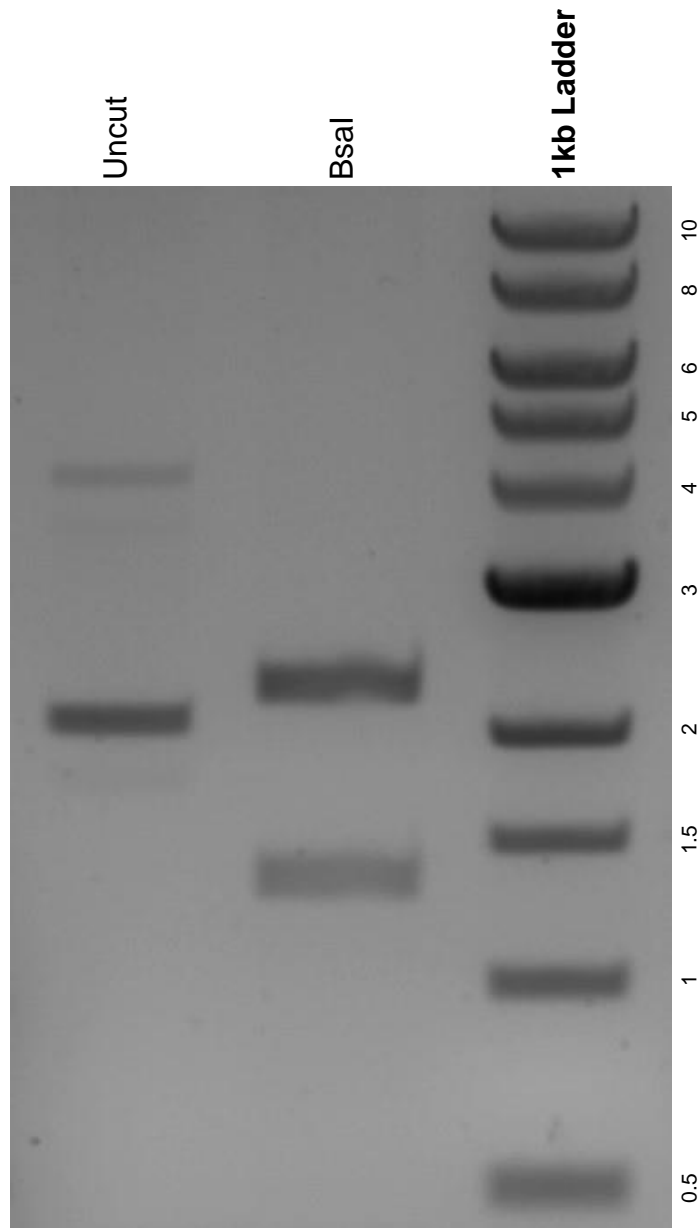


This gel depicts the NEB 1kb ladder and a digestion of the plasmid pICSL13001 with the following enzymes: Bsal.

**Plasmid 50265:**  
pICSL13001



DNA digested with Bsal single digest for **2 hours**.  
Gel: 0.8% agarose stained with 6 uL of ethidium bromide.  
Ran for 1.5 hours at 100 volts.