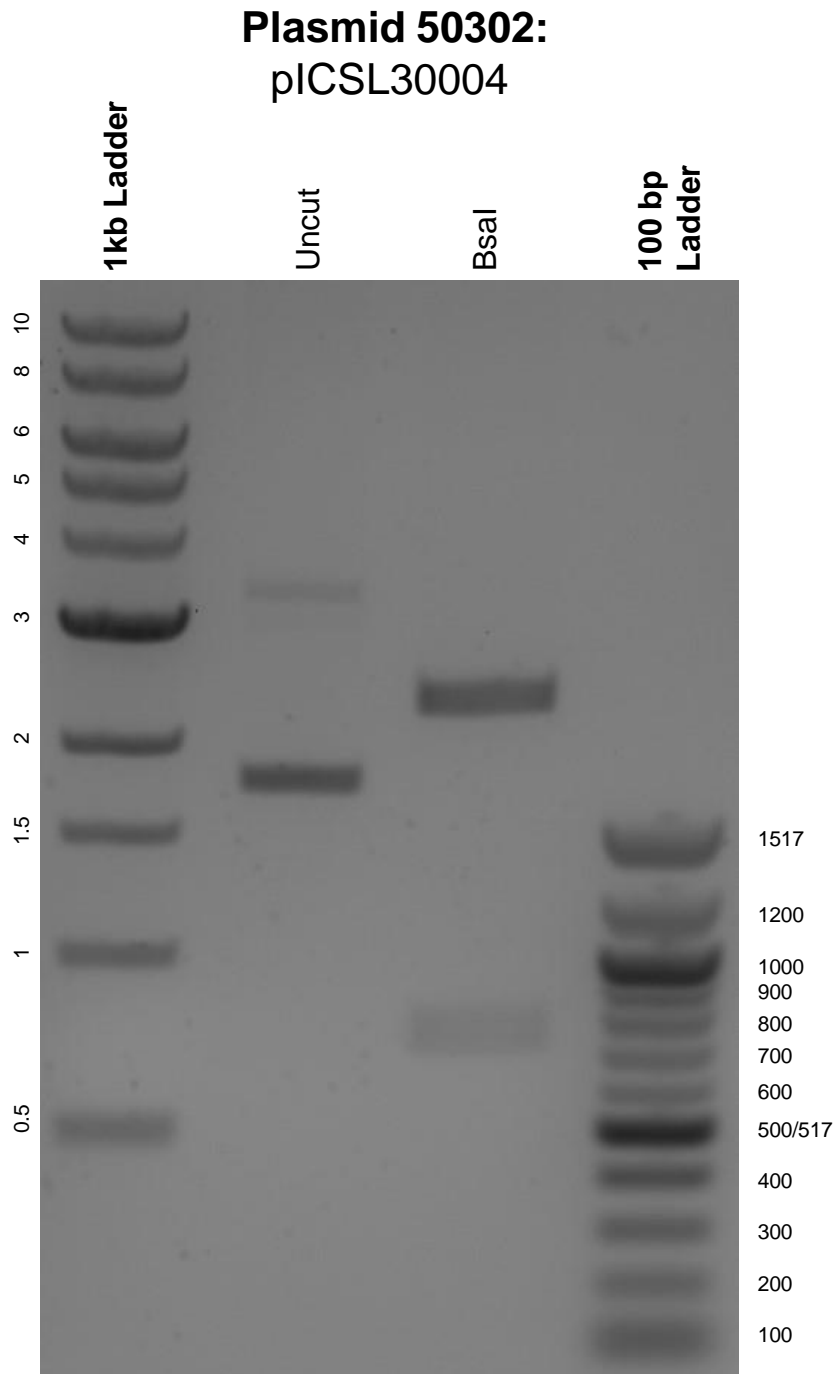


This gel depicts the NEB 1kb ladder and 100 bp ladder and a digestion of the plasmid pICSL30004 with the following enzymes: Bsal.



DNA digested with Bsal single digest for **2 hours**.  
Gel: 0.8% agarose stained with 6 uL of ethidium bromide.  
Ran for 1.5 hours at 100 volts.