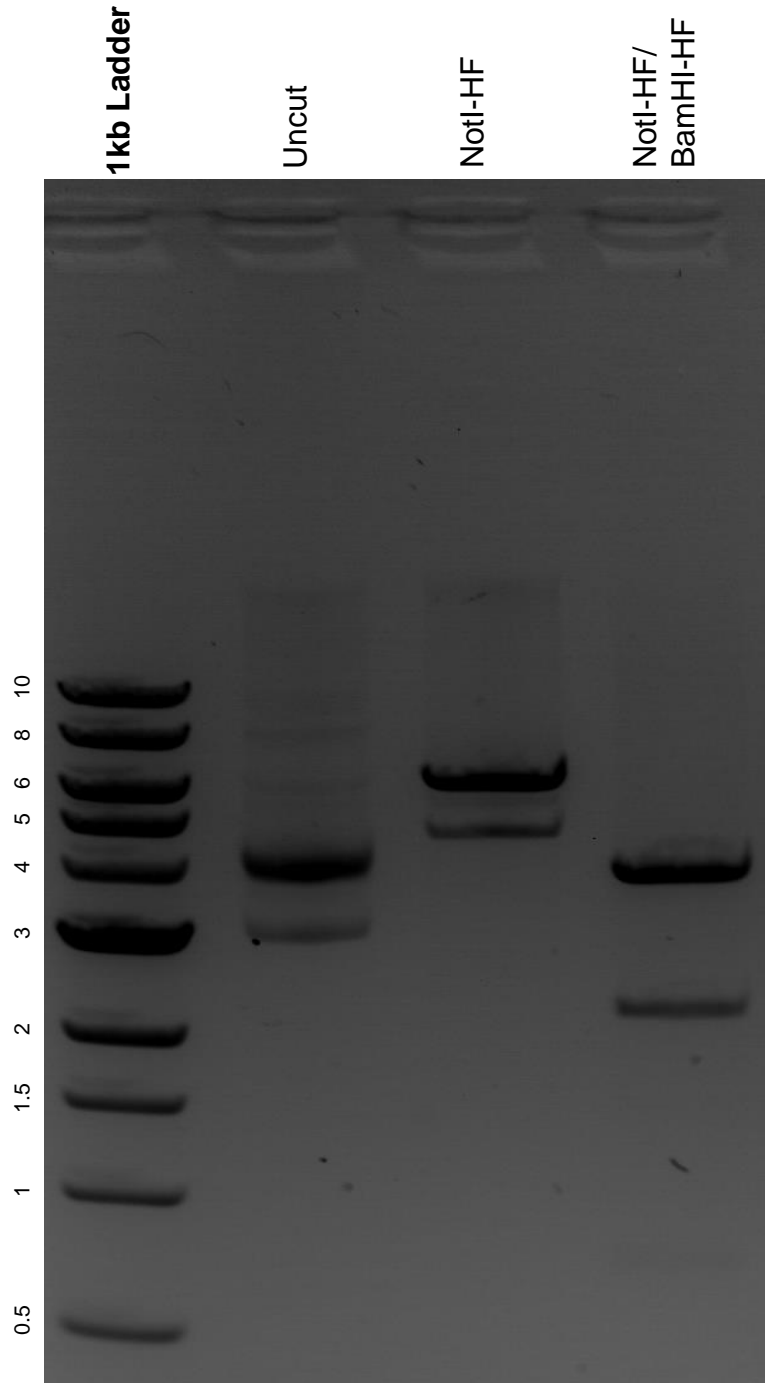


This gel depicts the NEB 1kb ladder and a digestion of the plasmid pBS-3xGFP with the following enzymes: NotI-HF and BamHI-HF.

**Plasmid 50659:**  
pBS-3xGFP



DNA digested with NotI-HF single digest and NotI-HF/BamHI-HF double digest for **2 hours**.

Gel: 0.8% agarose stained with 5 uL of ethidium bromide.

Ran for 1.5 hours at 100 volts.