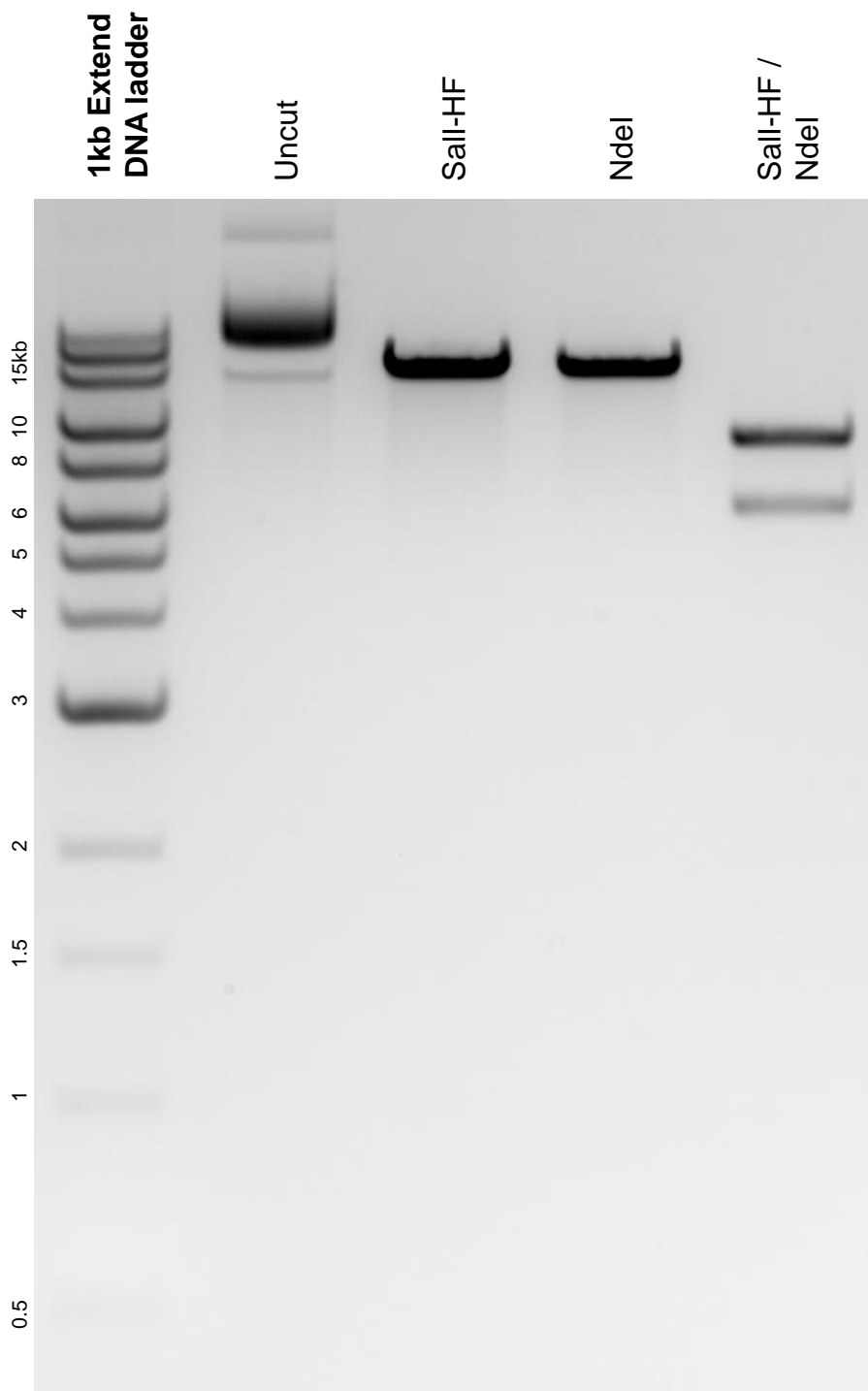


This gel depicts the NEB 1kb Extend DNA ladder and a digestion of plasmid 50916 with Sall-HF and NdeI.

**Plasmid #: 50916**  
**pHAGE TRE dCas9-VP64**



DNA digested with Sall-HF single digest, NdeI single digest, and Sall-HF / NdeI double digest for 2 hours. Gel: 1% agarose stained with ethidium bromide. Run for 2 hours at 80 volts.