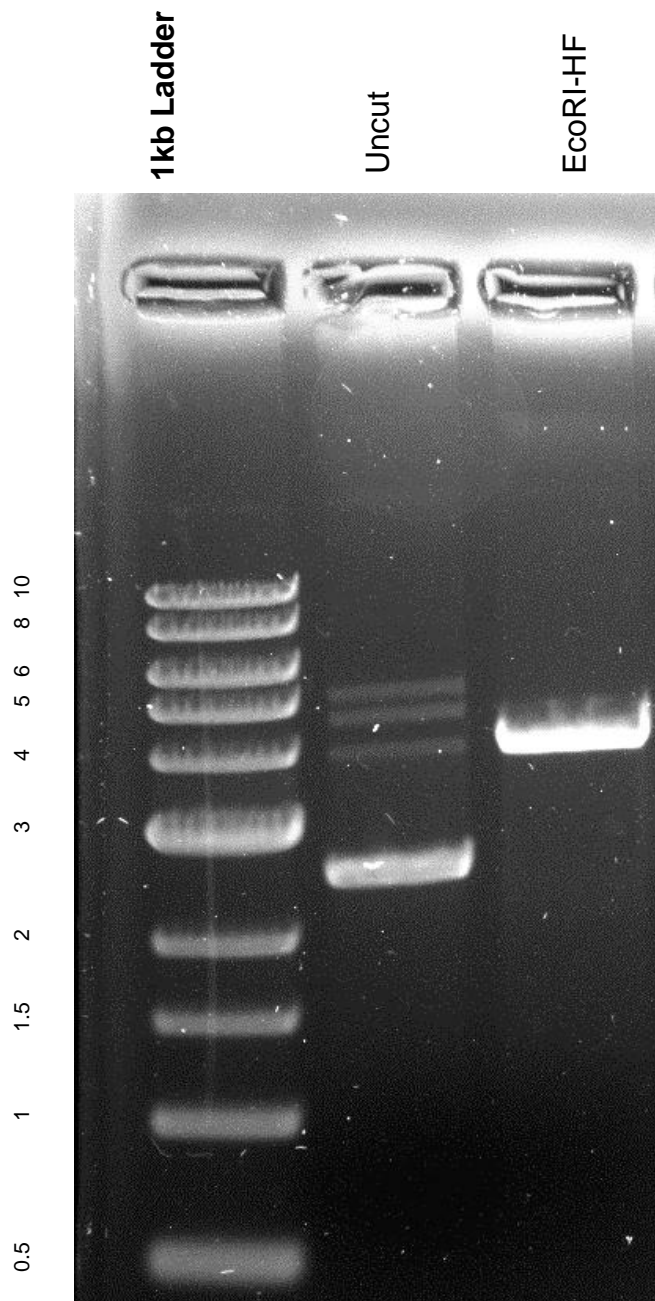


This gel depicts the NEB 1kb ladder and a digestion of the plasmid pDsRed-attP with the following enzymes:EcoRI-HF

Plasmid #51019
pDsRed-attP



DNA digested with EcoRI-HF single digest for **2 hours**
Gel: 0.8% TAE stained with 100 ml 1X TAE and 5uL of ethidium bromide
Ran for 2 hours 10 min at **60** volts