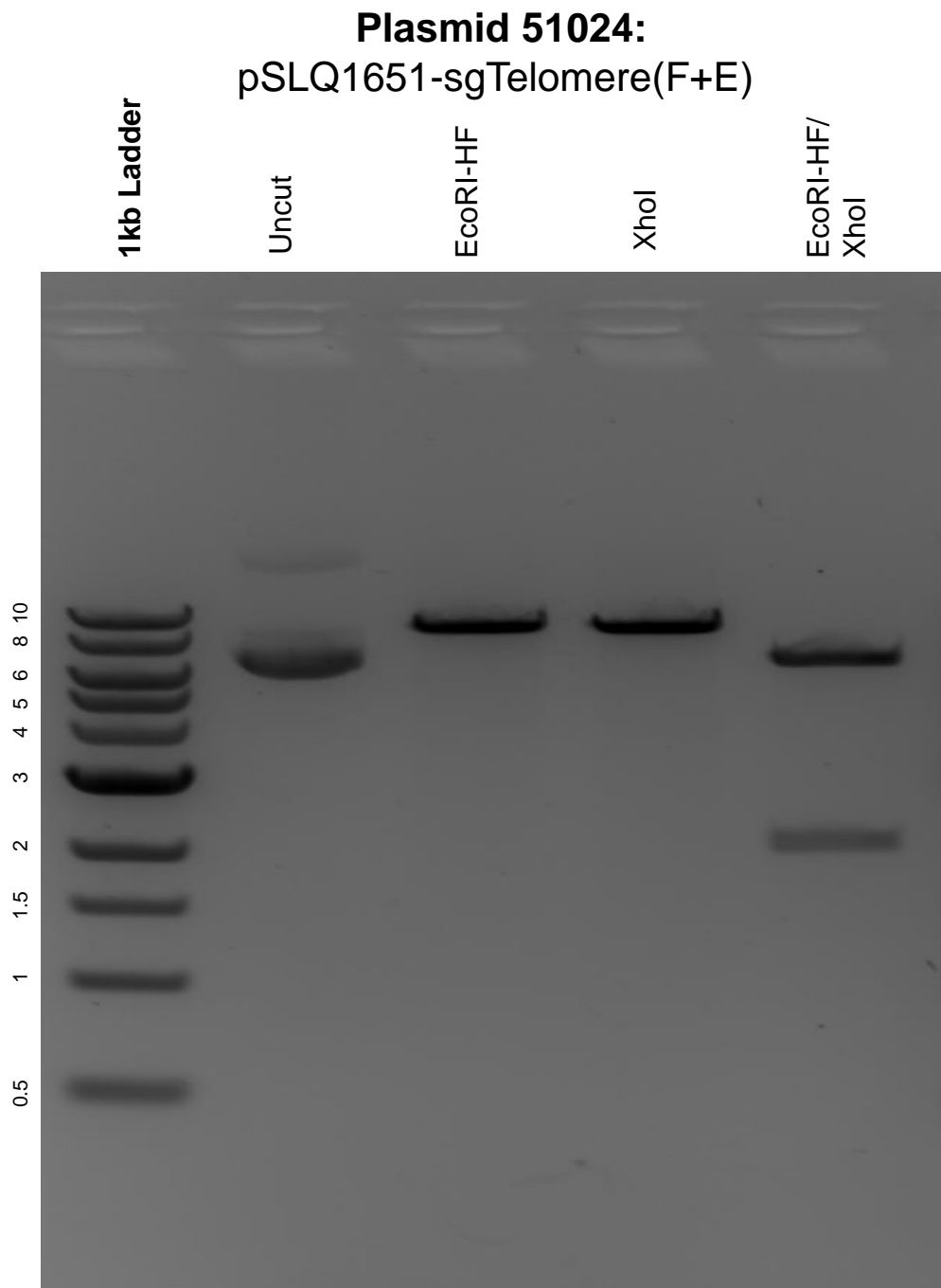


This gel depicts the NEB 1kb ladder and a digestion of the plasmid pSLQ1651-sgTelomere(F+E) with the following enzymes: EcoRI-HF and XhoI.



DNA digested with EcoRI-HF and XhoI single digests and EcoRI-HF/XhoI double digest for **2 hours**.

Gel: 0.8% agarose stained with 5 uL of ethidium bromide.

Ran for 1.5 hours at 100 volts.