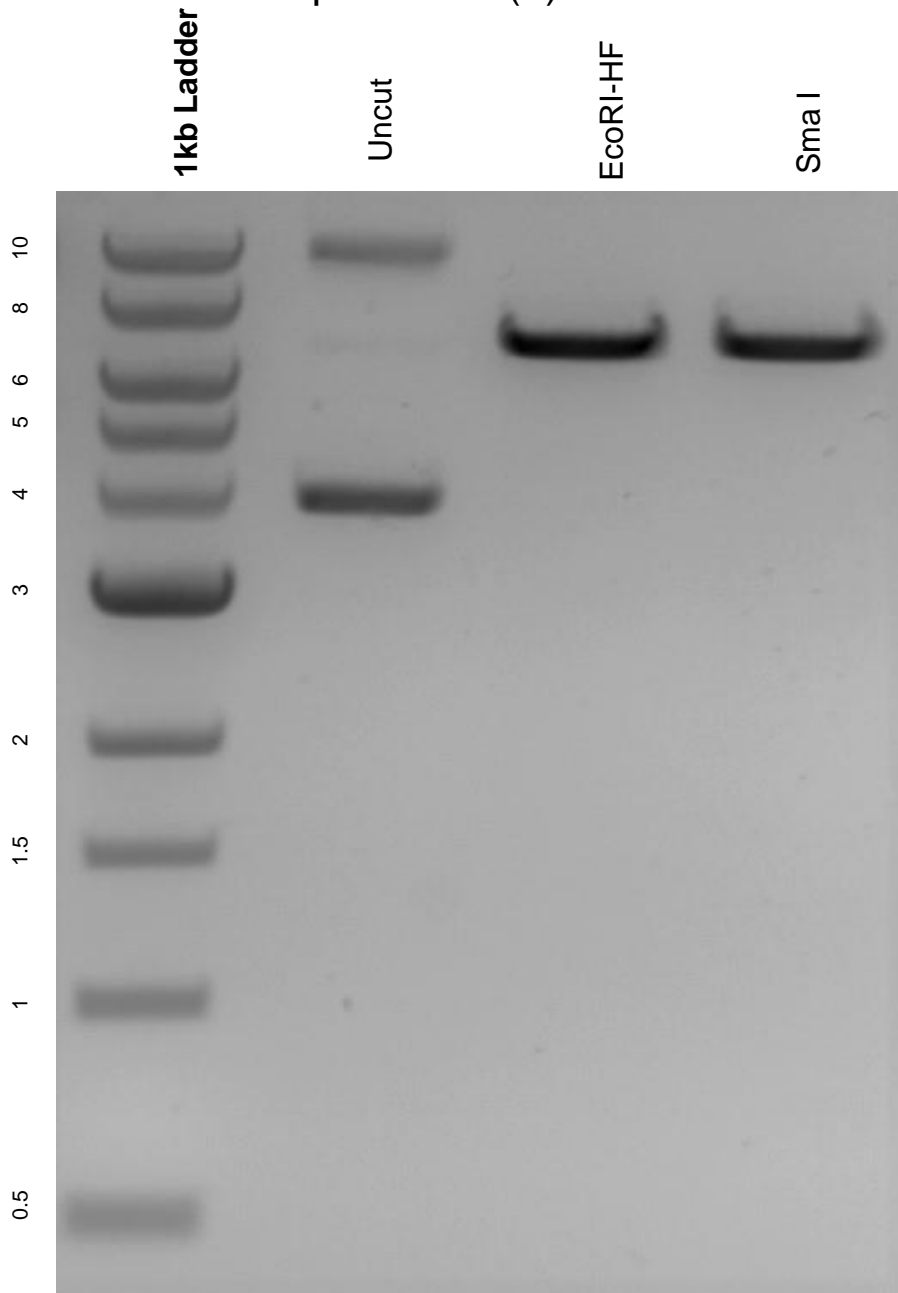


This gel depicts the NEB 1kb ladder and a digestion of the plasmid pcDNA3.1(+)
IRES GFP with the following enzymes: EcoRI-HF and Sma I.

Plasmid 51406:
pcDNA3.1(+)
IRES GFP



DNA digested with EcoRI-HF and Sma I single digests for **2 hours**.
Gel: 0.8% agarose stained with 6 uL of ethidium bromide.
Ran for 1.5 hours at 100 volts.