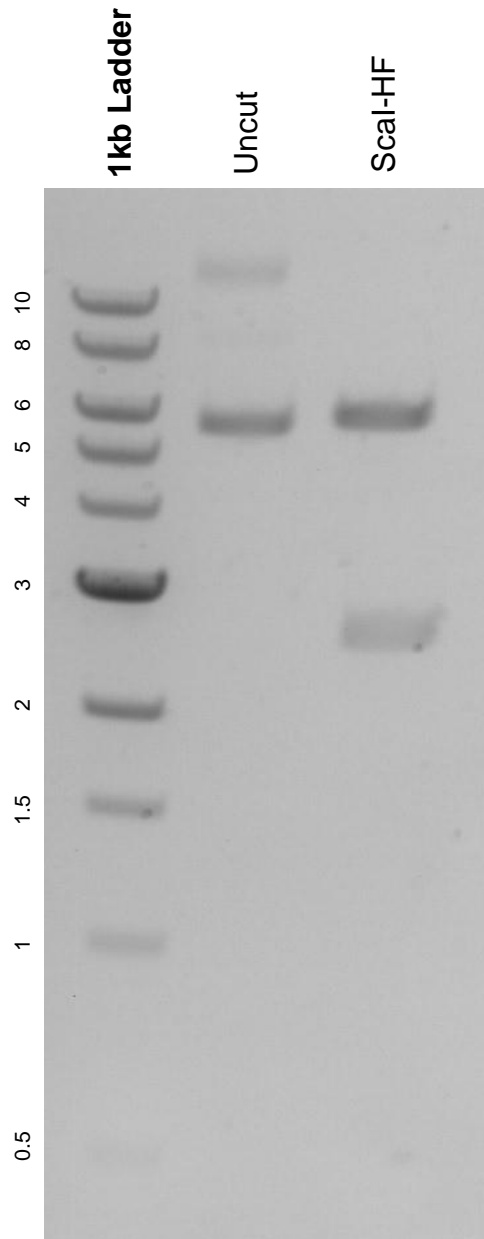


This gel depicts the NEB 1kb ladder and a digestion of the plasmid pExp_CAG:EYFP with the following enzymes: Scal-HF.

Plasmid 51791:
pExp_CAG:EYFP



DNA digested with a Scal-HF single digest for **2 hours**.
Gel: 0.8% agarose stained with 5 uL of ethidium bromide.
Ran for 1.5 hours at 100 volts.