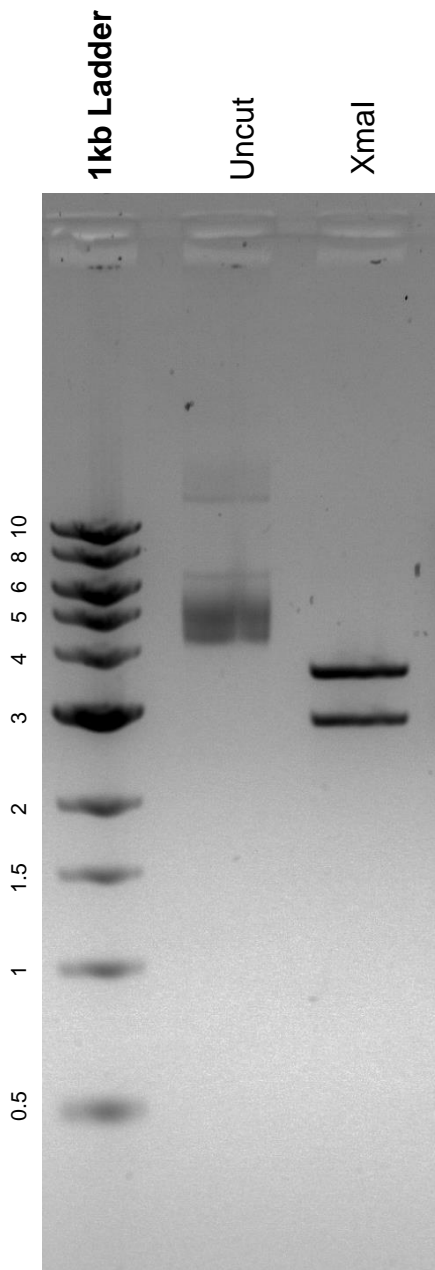


This gel depicts the NEB 1kb ladder and a digestion of the plasmid paavCAG-JxOFF-pre-mGRASP-mCerulean with the following enzyme: XmaI.

Plasmid 51900:
paavCAG-JxOFF-pre-mGRASP-
mCerulean



DNA digested with XmaI single digest for **2 hours**.
Gel: 0.8% agarose stained with 5 uL of ethidium bromide.
Ran for 2 hours at 80 volts.