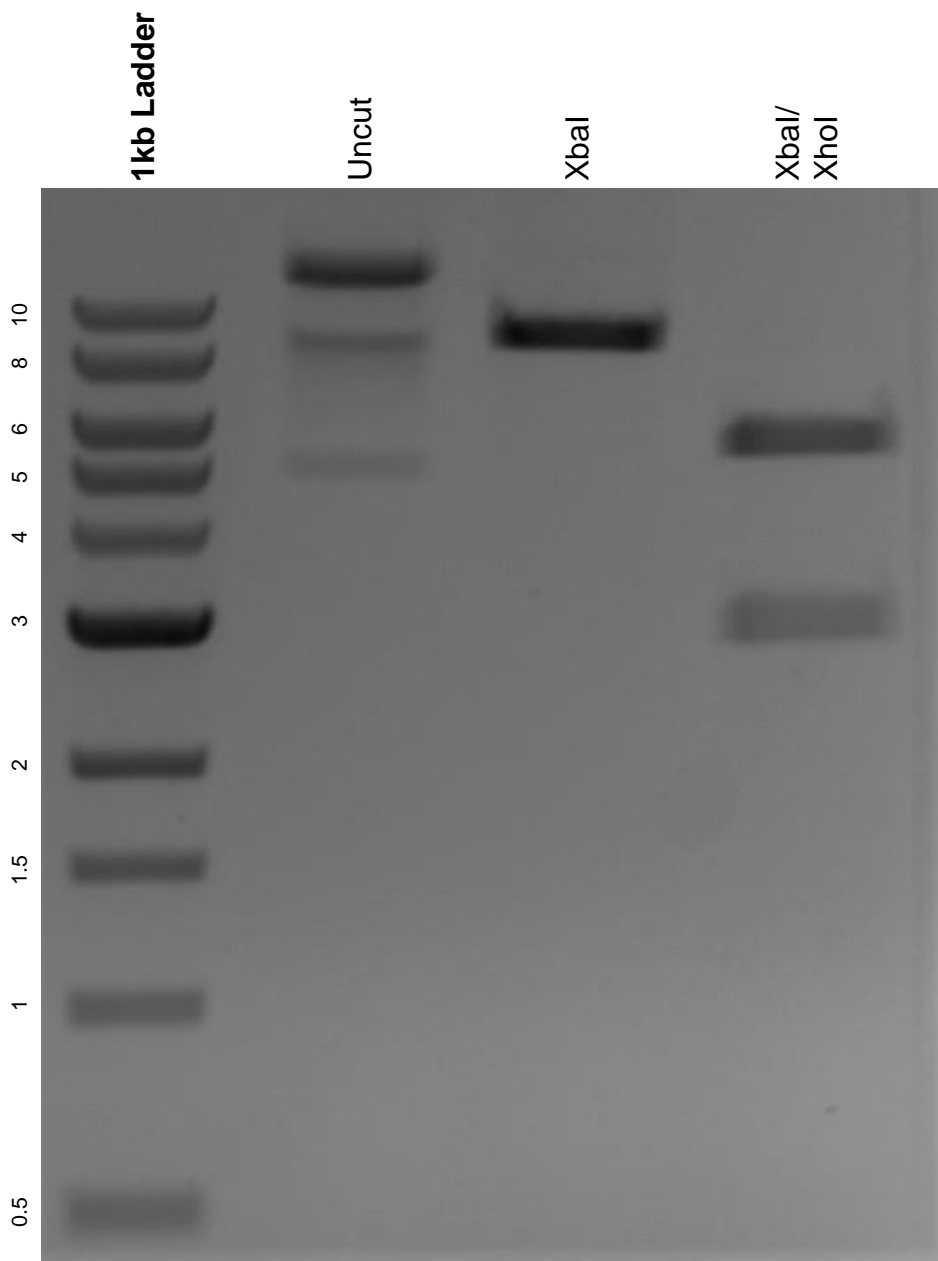


This gel depicts the NEB 1kb ladder and a digestion of the plasmid PDIA4-bio-His with the following enzymes: XbaI and XhoI.

**Plasmid 52071:**  
PDIA4-bio-His



DNA digested with XbaI single digest and XbaI/ XhoI double digest for **2 hours**.  
Gel: 0.8% agarose stained with 6 uL of ethidium bromide.  
Ran for 1.5 hours at 100 volts.