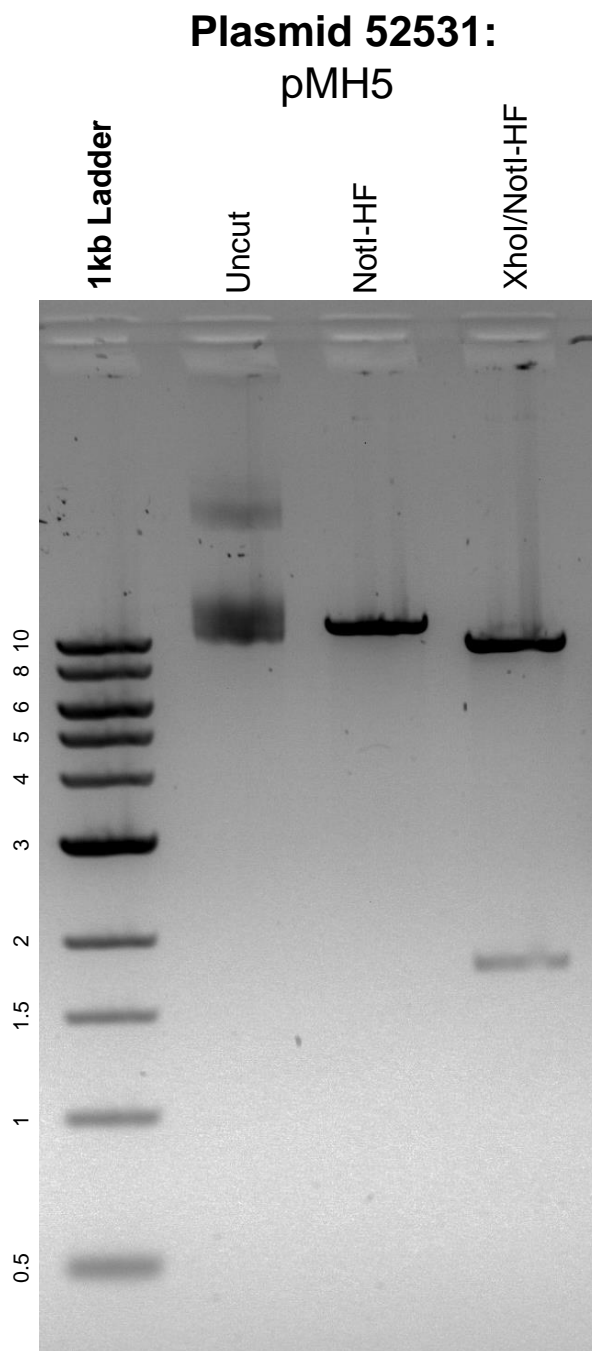


This gel depicts the NEB 1kb ladder and a digestion of the plasmid pMH5 with the following enzymes: NotI-HF and XhoI.



DNA digested with NotI-HF single digest and XhoI/NotI-HF double digest for **2 hours**.
Gel: 0.8% agarose stained with 5 uL of ethidium bromide.
Ran for 2 hours at 80 volts.