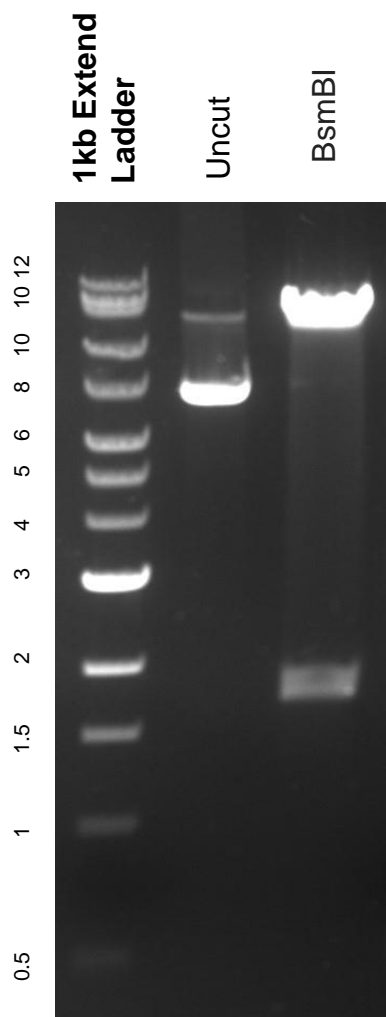


This gel depicts the NEB 1kb Extend Ladder and a digestion of the plasmid lentiCRISPR v2 with the following enzymes: BsmBI

### Plasmid 52961 lentiCRISPR v2



DNA digested with : BsmBI single digests **2 hours**.  
Gel: 0.8% agarose stained with 6 uL of SYBR Safe.  
Ran for 1.5 hours at 100 volts.